

# EQUIPMENT FLEET



JOHN DEERE

<p><b>17G EXCAVATOR</b> 1720-kg (3,790 lb.) operating weight </p>	<p><b>345G LC EXCAVATOR</b> 35 700-kg (78,710 lb.) operating weight </p>	<p><b>655K CRAWLER LOADER - WASTE HANDLER</b> 116 kW (155 net hp) / 1.6-3.6-m<sup>3</sup> (2.1-4.7 cu. yd.) heaped bucket capacities </p>	<p><b>304L LOADER</b> 48 kW (65 net hp) / 0.8-1.6-m<sup>3</sup> (1.0-2.1 cu. yd.) heaped bucket capacities </p>
<p><b>26G EXCAVATOR</b> 2620-2770-kg (5,780- 6,110 lb.) operating weight </p>	<p><b>350 P-TIER EXCAVATOR - SMARTGRADE</b> 36 734-kg (80,895 lb.) operating weight </p>	<p><b>755K CRAWLER LOADER - WASTE HANDLER</b> 145 kW (194 net hp) / 2.0-4.5-m<sup>3</sup> (2.6-5.9 cu. yd.) heaped bucket capacities </p>	<p><b>324L LOADER</b> 52 kW (71 net hp) / 0.8-1.6-m<sup>3</sup> (1.0-2.1 cu. yd.) heaped bucket capacities </p>
<p><b>30G EXCAVATOR</b> 3105-3275-kg (6,850- 7,220 lb.) operating weight </p>	<p><b>380 P-TIER EXCAVATOR - SMARTGRADE</b> 38 765-kg (85,462 lb.) operating weight </p>	<p><b>317G COMPACT TRACK LOADER</b> 48.5 kW (65 gross hp) / 45.6 kW (61 net hp) / 965-kg (2,125 lb.) rated operating capacity </p>	<p><b>344L LOADER</b> 76 kW (103 net hp) / 1.5-2.0-m<sup>3</sup> (2.0-2.6 cu. yd.) heaped bucket capacities </p>
<p><b>35G EXCAVATOR</b> 3520-3690-kg (7,760- 8,135 lb.) operating weight </p>	<p><b>470 P-TIER EXCAVATOR - SMARTGRADE</b> 51 218-kg (112,916 lb.) operating weight </p>	<p><b>325G COMPACT TRACK LOADER</b> 54.8 kW (74 gross hp) / 52.5 kW (70 net hp) / 1176-kg (2,590 lb.) rated operating capacity </p>	<p><b>444 P-TIER LOADER</b> 92 kW (124 net hp) / 1.9-3.4-m<sup>3</sup> (2.5-4.5 cu. yd.) heaped bucket capacities </p>
<p><b>50G EXCAVATOR</b> 4790-4920-kg (10,560- 10,847 lb.) operating weight </p>	<p><b>670G LC EXCAVATOR</b> 69 900-kg (154,103 lb.) operating weight </p>	<p><b>331G COMPACT TRACK LOADER</b> 68 kW (91 gross hp) / 66 kW (89 net hp) / 1407-kg (3,100 lb.) rated operating capacity </p>	<p><b>524 P-TIER LOADER - AG MATERIAL HANDLER</b> 113 kW (152 net hp) / 1.9-3.4-m<sup>3</sup> (2.5-4.5 cu. yd.) heaped bucket capacities </p>
<p><b>60G EXCAVATOR</b> 6010-6180-kg (13,250- 13,620 lb.) operating weight </p>	<p><b>870G LC EXCAVATOR</b> 85 600-kg (188,716 lb.) operating weight </p>	<p><b>333G COMPACT TRACK LOADER - SMARTGRADE</b> 74.6 kW (100 gross hp) / 72 kW (97 net hp) / 1680-1848-kg (3,700- 4,071 lb.) rated operating capacity </p>	<p><b>544 P-TIER LOADER - AG MATERIAL HANDLER</b> 123 kW (166 net hp) / 1.9-4.0-m<sup>3</sup> (2.5-5.25 cu. yd.) heaped bucket capacities </p>
<p><b>75G EXCAVATOR</b> 8143-kg (17,952 lb.) operating weight </p>	<p><b>450K DOZER - STD/LGP</b> 60 kW (80 net hp) / 7959-8522-kg (17,510- 18,752 lb.) operating weight </p>	<p><b>316G SKID STEER</b> 48.5 kW (65 gross hp) / 45.6 kW (61 net hp) / 795-kg (1,750 lb.) rated operating capacity </p>	<p><b>624 P-TIER LOADER - AG MATERIAL HANDLER/ WASTE HANDLER</b> 143 kW (192 net hp) / 1.9-4.0-m<sup>3</sup> (2.5-5.25 cu. yd.) heaped bucket capacities </p>
<p><b>85G EXCAVATOR</b> 8729-kg (19,244 lb.) operating weight </p>	<p><b>550K DOZER - STD/LGP</b> 69 kW (92 net hp) / 8981-9544-kg (19,758- 21,000 lb.) operating weight </p>	<p><b>318G SKID STEER</b> 48.5 kW (65 gross hp) / 45.6 kW (61 net hp) / 883-kg (1,945 lb.) rated operating capacity </p>	<p><b>644 G-TIER LOADER</b> 169 kW (227 net hp) / 3.1-3.2-m<sup>3</sup> (4.0-4.25 cu. yd.) heaped bucket capacities </p>
<p><b>130G EXCAVATOR</b> 13 407-13 880-kg (29,531- 30,573 lb.) operating weight </p>	<p><b>650K DOZER - XLT/LGP/ SMARTGRADE</b> 78 kW (104 net hp) / 9691-10 156-kg (21,320- 22,343 lb.) operating weight </p>	<p><b>320G SKID STEER</b> 51.7 kW (69 gross hp) / 49.4 kW (66 net hp) / 994-kg (2,190 lb.) rated operating capacity </p>	<p><b>644 P-TIER LOADER - WASTE HANDLER</b> 186 kW (249 net hp) / 3.1-3.6-m<sup>3</sup> (4.0-4.75 cu. yd.) heaped bucket capacities </p>
<p><b>135G EXCAVATOR</b> 14 300-15 400-kg (31,500- 33,920 lb.) operating weight </p>	<p><b>700L DOZER - XLT/LGP/ SMARTGRADE/PIPELAYER</b> 101 kW (135 net hp) / 14 016-14 555-kg (30,900- 32,088 lb.) operating weight </p>	<p><b>324G SKID STEER</b> 55 kW (74 gross hp) / 52.5 kW (70 net hp) / 1221-kg (2,690 lb.) rated operating capacity </p>	<p><b>644 X-TIER LOADER - WASTE HANDLER</b> 172 kW (231 net hp) / 3.1-3.6-m<sup>3</sup> (4.0-4.75 cu. yd.) heaped bucket capacities </p>
<p><b>160G LC EXCAVATOR</b> 17 945-kg (39,526 lb.) operating weight </p>	<p><b>750L DOZER - STD/XLT/LGP/ SMARTGRADE</b> 131 kW (175 net hp) / 17 041-18 162-kg (37,569- 40,040 lb.) operating weight </p>	<p><b>330G SKID STEER</b> 68 kW (91 gross hp) / 66 kW (89 net hp) / 1362-kg (3,000 lb.) rated operating capacity </p>	<p><b>724 P-TIER LOADER - WASTE HANDLER</b> 200 kW (268 net hp) / 3.1-3.8-m<sup>3</sup> (4.0-5.0 cu. yd.) heaped bucket capacities </p>
<p><b>190G W WHEELED EXCAVATOR</b> 19 700-20 500-kg (43,431- 45,300 lb.) operating weight </p>	<p><b>850L DOZER - XLT/WLT/LGP/ SMARTGRADE/WASTE HANDLER/PIPELAYER</b> 168 kW (225 net hp) / 21 581-24 654-kg (47,578- 54,353 lb.) operating weight </p>	<p><b>332G SKID STEER</b> 74.6 kW (100 gross hp) / 72 kW (97 net hp) / 1634-kg (3,600 lb.) rated operating capacity </p>	<p><b>744L LOADER - LOG HANDLER/ PIPE HANDLER/WASTE HANDLER</b> 236 kW (316 net hp) / 3.8-4.5-m<sup>3</sup> (5.0-5.85 cu. yd.) heaped bucket capacities </p>
<p><b>200G EXCAVATOR</b> 20 788-kg (45,789 lb.) operating weight </p>	<p><b>950K DOZER - STD/LGP/ SMARTGRADE/STOCKPILE/ WASTE HANDLER</b> 198-209 kW (265-280 net hp) / 209 kW (280 hp) w/ PAT blade / 29 606-34 100-kg (65,300- 75,150 lb.) operating weight </p>	<p><b>204L LOADER</b> 45 kW (61 net hp) / 0.8-1.1-m<sup>3</sup> (1.0-1.4 cu. yd.) heaped bucket capacities </p>	<p><b>824L LOADER</b> 256 kW (343 net hp) / 3.8-5.2-m<sup>3</sup> (5.0-6.75 cu. yd.) heaped bucket capacities </p>
<p><b>210 P-TIER EXCAVATOR - SMARTGRADE™</b> 23 161-23 631-kg (51,061- 52,097 lb.) operating weight </p>	<p><b>1050K DOZER - STOCKPILE/ WASTE HANDLER/PIPELAYER</b> 261 kW (350 net hp) / 43 270-46 850-kg (95,400- 103,300 lb.) operating weight </p>	<p><b>244L LOADER</b> 52 kW (71 net hp) / 0.8-1.1-m<sup>3</sup> (1.0-1.4 cu. yd.) heaped bucket capacities </p>	
<p><b>245G LC EXCAVATOR</b> 25 500-25 800-kg (56,170- 56,830 lb.) operating weight </p>			
<p><b>250G LC EXCAVATOR</b> 25 463-kg (56,100 lb.) operating weight </p>			
<p><b>300G LC EXCAVATOR</b> 31 399-kg (69,223 lb.) operating weight </p>			

(Continued)

# EQUIPMENT FLEET



JOHN DEERE

**844L LOADER • LOG HANDLER/  
PIPE HANDLER**  
311 kW (417 net hp) /  
4.8–6.1-m<sup>3</sup> (6.3–8.0 cu. yd.)  
heaped bucket capacities



**844L AGGREGATE HANDLER**  
320 kW (429 net hp) /  
7.1–7.5-m<sup>3</sup> (9.3–9.8 cu. yd.)  
heaped bucket capacities



**944K LOADER**  
400 kW (536 net hp) /  
6.5–7.65-m<sup>3</sup> (8.5–10.0 cu. yd.)  
heaped bucket capacities



**210L EP/210L TRACTOR LOADER**  
52–75 kW (69–100 net hp) /  
0.86–0.96-m<sup>3</sup> (1.12–1.25 cu. yd.)  
bucket capacity range



**310L EP/310L BACKHOE LOADER**  
52–75 kW (69–100 net hp) /  
4.16–4.30-m (13 ft. 8 in.–  
14 ft. 1 in.) digging depth



**310SL BACKHOE LOADER**  
77 kW (103 net hp) / 4.35-m  
(14 ft. 3 in.) digging depth



**310SL HL BACKHOE LOADER**  
84 kW (113 net hp) / 4.59-m  
(15 ft. 1 in.) digging depth



**315SL BACKHOE LOADER**  
77 kW (103 net hp) / 4.08-m  
(13 ft. 5 in.) digging depth



**410L BACKHOE LOADER**  
87 kW (116 net hp) / 4.85-m  
(15 ft. 11 in.) digging depth



**710L BACKHOE LOADER**  
110 kW (148 net hp) / 5.26-m  
(17 ft. 3 in.) digging depth



**620G/GP TANDEM-DRIVE/  
SMARTGRADE™ MOTOR GRADER**  
138–160 kW (185–215 net hp) /  
18 325-kg (40,400 lb.)  
typical operating weight



**622G/GP SIX-WHEEL-DRIVE/  
SMARTGRADE MOTOR GRADER**  
138–168 kW (185–225 net hp) /  
19 100-kg (42,108 lb.)  
typical operating weight



**670G/GP TANDEM-DRIVE/  
SMARTGRADE MOTOR GRADER**  
172–175 kW (230–235 net hp) /  
19 230-kg (42,395 lb.)  
typical operating weight



**672G/GP SIX-WHEEL-DRIVE/  
SMARTGRADE MOTOR GRADER**  
187–190 kW (250–255 net hp) /  
20 000-kg (44,092 lb.)  
typical operating weight



**770G/GP TANDEM-DRIVE/  
SMARTGRADE MOTOR GRADER**  
187–190 kW (250–255 net hp) /  
19 425-kg (42,825 lb.)  
typical operating weight



**772G/GP SIX-WHEEL-DRIVE/  
SMARTGRADE MOTOR GRADER**  
201–205 kW (270–275 net hp) /  
20 500-kg (45,195 lb.)  
typical operating weight



**870G/GP TANDEM-DRIVE/  
SMARTGRADE MOTOR GRADER**  
201–209 kW (270–280 net hp) /  
20 715-kg (45,668 lb.)  
typical operating weight



**872G/GP SIX-WHEEL-DRIVE/  
SMARTGRADE MOTOR GRADER**  
209–224 kW (280–300 net hp) /  
21 600-kg (47,620 lb.)  
typical operating weight



**260E ARTICULATED  
DUMP TRUCK**  
239 kW (321 net hp) /  
15.0-m<sup>3</sup> (19.6 cu. yd.)  
heaped capacity



**310E ARTICULATED  
DUMP TRUCK**  
264 kW (354 net hp) /  
17.5-m<sup>3</sup> (22.9 cu. yd.)  
heaped capacity



**410E-II ARTICULATED  
DUMP TRUCK**  
329 kW (441 net hp) /  
22.9-m<sup>3</sup> (30.0 cu. yd.)  
heaped capacity



**460E-II ARTICULATED  
DUMP TRUCK**  
359 kW (481 net hp) /  
25.2-m<sup>3</sup> (32.9 cu. yd.)  
heaped capacity



**EJECTOR AND  
CARRIALL SCRAPERS**  
115–18.3-m<sup>3</sup>  
(15.0–24.0 cu. yd.)  
heaped capacities



**9R 4WD SCRAPER  
TRACTORS**  
360–471 kW (490–640 hp)



**9RT TRACKED SCRAPER  
TRACTORS**  
346–419 kW (470–570 hp)



**9RX TRACKED SCRAPER  
TRACTORS**  
360–434 kW (490–590 hp)



## John Deere Construction Attachments



BACKHOE LOADER BUCKET



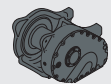
BACKHOE MULTIPURPOSE BUCKET



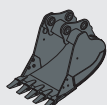
BACKHOE THUMB



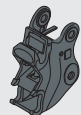
CRAWLER RIPPER



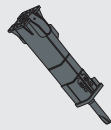
CRAWLER WINCH



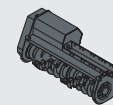
EXCAVATOR BUCKET



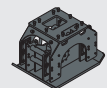
EXCAVATOR COUPLER



EXCAVATOR HAMMER



EXCAVATOR MULCHER



EXCAVATOR PLATE COMPACTOR



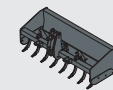
EXCAVATOR ROTARY CUTTER



EXCAVATOR SEVERE-DUTY BUCKET



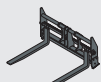
GRADER SCARIFIER



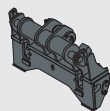
LANDSCAPE LOADER BOX BLADE



LOADER CONSTRUCTION BUCKET



LOADER CONSTRUCTION FORKS



LOADER COUPLER



LOADER LOG FORKS