

PRODUCT SUPPORT CATALOG



JOHN DEERE

2022 SPRING

FEATURED INSIDE

Certified Rebuild Centers are dealer facilities certified by John Deere for performing machine rebuilds.

See page 21

7 John Deere Protect™

14–15 Cutting Edges

20 Powertrain ReLife Plus

32–33 Batteries and Battery Accessories

Order parts online anytime
at [JohnDeere.com/Parts](https://www.johndeere.com/Parts)

★ ★ ★ ★ ★ ★ ★ ★

WORK NOW.



JOHN DEERE
FINANCIAL

PAY LATER.

★ ★ ★ ★ ★ ★ ★ ★

Keep working and keep your cash.

Put what you need on PowerPlan™.

The construction industry is booming, and a PowerPlan™ account from John Deere Financial can help you take advantage of every opportunity for growth. With instant no-payment, no-interest* purchasing power on parts, service, attachments and technology, nothing will stand in the way of building your business.

PARTS ★ SERVICE ★ ATTACHMENTS ★ RENTALS
PREVENTATIVE MAINTENANCE ★ TECHNOLOGY

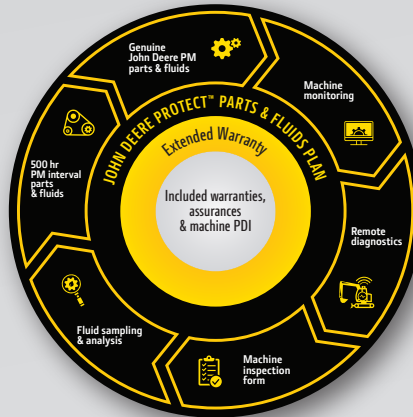
Open your PowerPlan account today at
JohnDeereFinancial.com/PowerPlan.

WHAT'S NEW?

Stronger Protection

Truly great service means giving the customer options. The John Deere Protect™ program was recently expanded to include the new John Deere Parts & Fluids plan. This means preventative maintenance and inspections can now be conducted by customers' own service technicians. The end result: greater flexibility, enhanced uptime, and another way to protect your investment.

See page 7 for more details.



All Terrain

Hard Surface
Traction

Skid Steer Tweels

These airless radial tires are available in two tread patterns: All Terrain and Hard Surface Traction.

- Improved shear beam construction is engineered to maximize core life.
- New spoke material helps provide up to 10 times greater spoke life compared to the previous models.
- New interlocked hub is designed to increase durability in demanding conditions.
- Bounce is reduced compared to pneumatic tires.
- Available in 2 tire sizes: 10N16.5 and 12N16.5.

John Deere Two-Way Handheld Radios

Ridiculously long battery life (up to 15 hours), extensive range, loaded with extras and protected by Midland's 3-year limited warranty. X-TALKER T71 walkie talkie features up to a 38-mile range and features 36 Channels and 121 Privacy Codes, Channel Scan, and Midland's signature NOAA Weather Alert and Weather Scan technology.



See your local John Deere dealer for more details on these new products.

Table of Contents

| | |
|---|-------|
| John Deere Financial | 2 |
| What's New? | 3 |
| John Deere Connected Support™ | 4–5 |
| Hydraulic Hoses | 6 |
| John Deere Protect™ | 7 |
| Undercarriage | 8–9 |
| TK-Series Tooth System | 10–11 |
| All-Makes RVJ Bucket Teeth | 12 |
| All-Makes Bucket Teeth | 13 |
| Cutting Edges | 14–15 |
| Forestry Saw Teeth | 16 |
| All-Makes Rubber Tracks | 17 |
| JAGZ™ | 18 |
| Half-Arrow Blades | 19 |
| Powertrain ReLife Plus | 20 |
| Certified Rebuild Centers | 21 |
| Reman..... | 22–23 |
| Oil, Lubricants, and Filters | 24–25 |
| Coolants..... | 26 |
| Diesel Exhaust Fluid and Equipment | 27 |
| Fuel Additives..... | 28 |
| Grease..... | 29 |
| Towels and Chemicals..... | 30 |
| Paint | 31 |
| Batteries and Battery Accessories..... | 32–33 |
| Commercial Job and Workshop Products | 34–35 |

John Deere Connected Support™



When you buy John Deere equipment you expect reliability.

You should, because Nothing Runs like a Deere.

That's why John Deere equipment comes prepared from the factory with technology built in.

It senses potential issues and can alert you promptly — in the cab or anywhere you are.

You also know that when you're on the jobsite, the unexpected can happen.

When it does, you need a quick resolution.

Better yet, your dealer can receive alerts and connect to your equipment.

You know your dealer is always ready to keep you running — and running better.

WHEN YOU CONNECT YOUR MACHINE:

You Can

- Monitor alerts from the machine remotely
- Monitor engine hours and utilization
- View machine location and get driving directions to the jobsite
- Monitor fuel level and idle time

Your Dealer Can

- Monitor alerts coming from your machine
- Remotely connect to your machine for real-time diagnosis
- Leverage Expert Alerts from John Deere to address potential future downtime
- Perform software updates from the dealership

Most new John Deere machines come ready with five years of machine connectivity to enable these tools that you keep running.

Ask your dealer about John Deere Connected Support to learn more.

One of the most powerful reasons to choose John Deere.

Our remote machine-monitoring capability for tracking the health of machines in the field enables your dealer to respond more efficiently to critical issues that can result in costly downtime.

Our Machine Monitoring Center specialists use advanced telematics and alert-management tools to stay on top of potential issues. When necessary, they engage John Deere factory-trained technicians, who have the ability to read and clear diagnostic codes, record machine-performance data, and even update software — without ever visiting the machine in the field.

Typical response time is quick, and many times problems can be addressed before they cause downtime. When technicians do need to visit the jobsite, they often arrive with the correct repair parts already in hand.

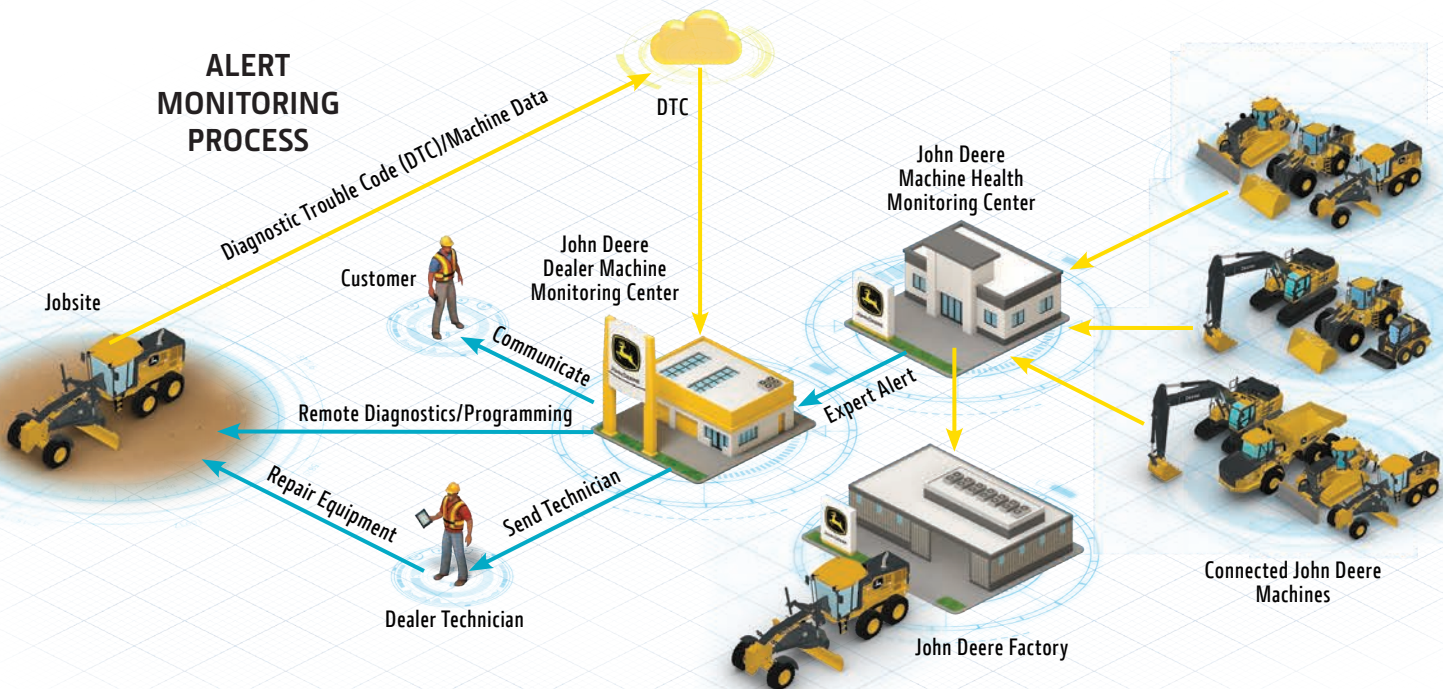


Looking at the big picture now can help us improve our service to you in the future

John Deere Machine Health Monitoring Center specialists develop solutions that enrich our monitoring services. They do this by analyzing accumulated machine data, identifying trends that warrant a closer look, and then developing new and improved preventative maintenance and repair protocols that we can leverage in the future.

So while we focus on addressing issues that may immediately impact you and your fleet, the Machine Health Monitoring Center keeps an eye on the big picture so we can repair machines faster and even help you avoid unexpected downtime altogether.

ALERT MONITORING PROCESS



Hydraulic Hoses

John Deere hose assemblies built to OEM specifications.

Ask your dealer about hoses for any brand of equipment.



HOSES IN MINUTES

John Deere Orange V-Plugs

Orange V-Plugs are the perfect solution for quickly and reliably plugging hose and tube ends, ports, and other openings to prevent the leakage of messy fluids. With each plug covering a range of Inside Diameters (IDs), challenges encountered while performing maintenance or repair on fluid-conveyance systems are met swiftly and easily, and with your uptime in mind.



Use Orange V-Plugs to:

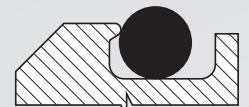
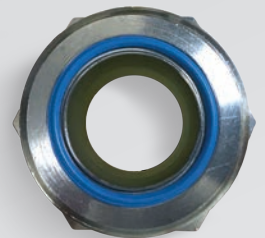
- Help prevent environmental contamination and unsafe work environments
- Stop the infiltration of dust and other ambient contaminants into sensitive systems
- Maintain a well-equipped shop tool chest and/or service vehicle toolbox

John Deere SecuRing™ Seal

SecuRing seal replaces the industry standard round cross-section o-rings currently used in face seal connections.

SecuRing eliminates the gap between different shapes in the sealing area.

- Improves seal retention in the groove.
- Reduces the chance for pinched or missed seals.
- Lightly coated for proper seating in the groove.
- Compatible with half-dovetail and straight sided ORFS grooves.
- Available for the following Hose Fitting Dash Sizes (-4, -6, -8, -10, -12, -16, -20, and -24).



Round O-ring



SecuRing Seal

JOHN DEERE PROTECT™

PROTECTED FOR THE LONG RUN

Choose a service plan that's right for you.¹ Purchase with an extended warranty and experience these powerful benefits with a dealer-serviced **John Deere Protect Service Plan**.

Prefer to conduct your own maintenance? Go with a customer-serviced **John Deere Protect Parts & Fluids Plan** and get the same benefits while having your own technicians take care of the service and labor.



**MACHINE
MONITORING**



**REMOTE
DIAGNOSTICS**



**FLUID SAMPLING
& ANALYSIS**



**500 HR PM INTERVAL
PARTS & FLUIDS**



**GENUINE JOHN DEERE
PM PARTS & FLUIDS**



**MACHINE
INSPECTION**

Service Plan: completed by dealer technician;
Parts & Fluids Plan: form supplied for completion
by customer's technician



**PM
LABOR**

Service Plan: completed by dealer technician;
Parts & Fluids Plan: completed
by customer's technician

CONTACT US FOR MORE INFORMATION OR VISIT:

DEERE.COM/LONGRUN

¹ John Deere Protect™ Service Plans are available for eligible models of construction equipment at participating John Deere dealers in the United States.

Number of Scheduled Maintenance Events and parts required varies based on specific model, in accordance with the operator's manual.

Excludes Compact Construction Equipment, Scraper Systems, and Forestry Equipment.

For complete details, see your local, participating John Deere dealer.

John Deere Undercarriage

Tough undercarriages with longer and more even wear.

With rapid and unbalanced undercarriage wear eating up some 50 percent of the average contractor's maintenance budget, John Deere undercarriages are strong allies in the battle to keep uptime up and operating costs down.

The steel that goes into our undercarriages provides the kind of deep-hardened resiliency that goes directly to your bottom line. And that's why we say the value that we build into John Deere undercarriages is truly hardened to the core.

We offer three choices to cover your needs:

Heavy-Duty Undercarriage

All components are carefully matched in tolerance, strength, hardness, and wear limits, for optimum wear life.

Extended Life Undercarriage

This wear resistant system features the addition of the popular and exclusive SC-2™-coated bushings.

Maximum Life Undercarriage

The Maximum Life Undercarriage incorporates SC-2-coated bushings along with stronger seals and larger components compared to the Standard and Extended Life Undercarriage systems that already deliver longer and more balanced wear in most soil conditions.

Undercarriage selection

The chart below compares the three John Deere undercarriage choices relative to seven different attributes. Your John Deere dealer has the expertise to help you understand the characteristics of each undercarriage and choose the one that is right for your operating conditions and business needs.

| | Standard | Extended Life | Maximum Life |
|---------------------------------------|----------|---------------|--------------|
| | GOOD | BETTER | BEST |
| Purchase Price | ■ | | |
| Operating Cost | | | ■ |
| Ride Comfort | ■ | ■ | ■ |
| Wear Life | | ■ | ■ |
| Abrasion Resistance – SC-2 | | ■ | ■ |
| Impact Resistance – Larger Components | | | ■ |
| Varying Ground Conditions | | ■ | ■ |

Note: All factors are dependent on soil conditions and specific application. Consult your local John Deere dealer to choose the right undercarriage for your operation.

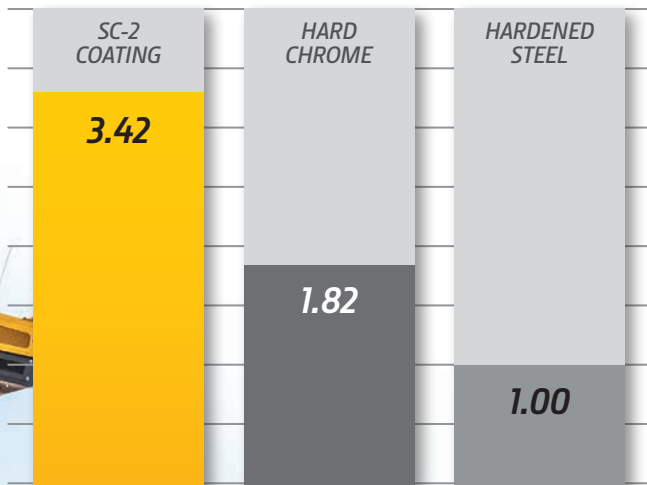





WARRANTY
Backed by a 3-year/
4,000-hour warranty.

SC-2 wear comparison

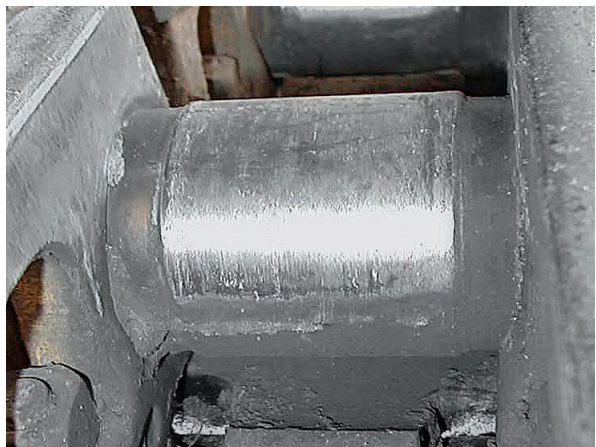
SC-2-coated bushings minimize service requirements because they deliver up to twice the life before you need to make a “turn decision.” In some cases, bushing turns may even be eliminated.



Standard bushing



Bushing with SC-2



Stands up to punishing tests

Track-chain assemblies were field-tested in sand. The photos above show that the standard bushing wore 32 percent, while the bushing with SC-2 coating had minimal wear.

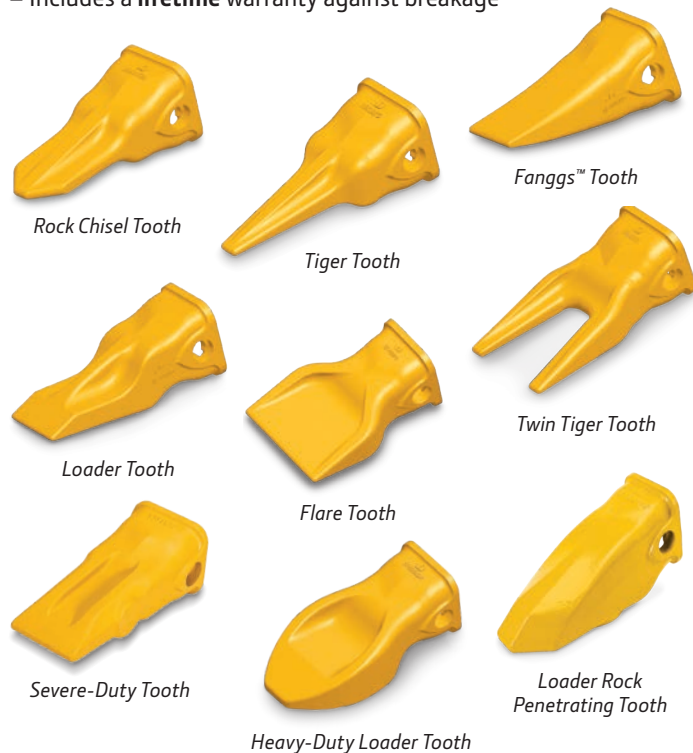


John Deere TK-Series Tooth System

Why it's better.

The TK-Series System is engineered to deliver maximum performance, quick and safe replacement, and superior tooth retention.

- Rubber locks are held captive when the tooth is retained for security and protection from direct impact
- Nearly a **70-percent consumption ratio**¹ means you are getting more for your money
- Over **50-percent-more usage** with heavy-duty TK-Series loader teeth²
- Includes a **lifetime** warranty against breakage

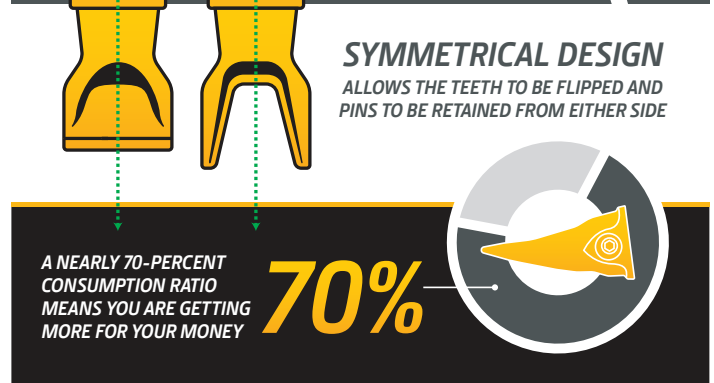
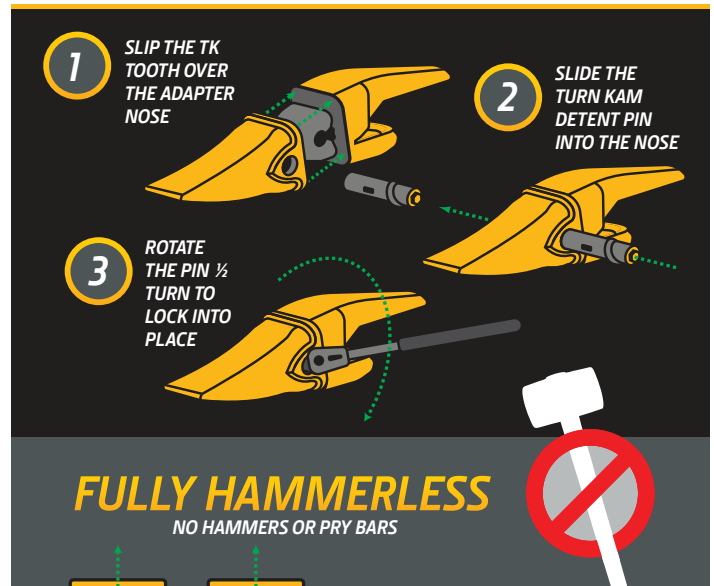


Note: TK-Series teeth installed on new John Deere equipment are painted yellow as shown. Aftermarket TK-Series teeth are black.

See your dealer for specific part numbers.

¹ Richmond, Virginia, field-test data from August 2012. A set of eight TK550LD teeth and eight TK550LDH teeth on a 90-metric-ton loader loading blasted granite was monitored and weighed at end of life. Data showed an average consumption ratio across all teeth for the LD set to be 67.18 percent, and 69.29 percent for the LDH set.

² Field-test data from October 2012 showed the TK550LDH (heavy-duty) teeth at end of life yielded 550 hours of production compared to an average of 254 hours for two sets of TK550LD (standard-duty) teeth tested on the same 90-metric-ton production loader in a blasted granite loading application.





CONTROL IN HARSH CONDITIONS

Keep your rock bucket rocking in the nastiest of situations with the Loader Rock Penetrating Tooth (LDRP).

The LDRP has 30-percent more wear material than its Heavy-Duty Loader Tooth (LDH) equivalent, giving this tooth extra bite where it's needed. Intended for rock buckets in highly abrasive conditions that show severe wear on the top of the tooth, the LDRP takes a chomp out of tough jobs.



John Deere All-Makes RVJ Bucket Teeth

A new twist on old technology.

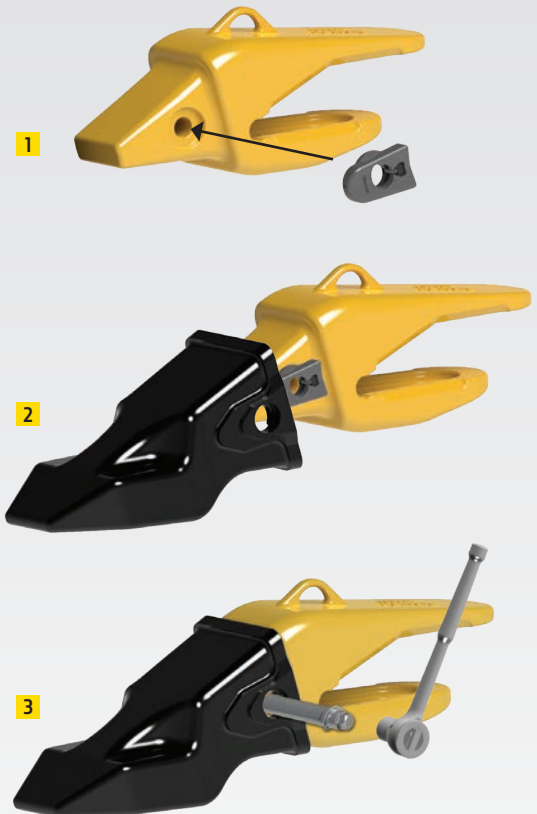
The RVJ Bucket Tooth System is engineered to deliver hammerless technology to existing Caterpillar J-Series adapters through a converter and helical pin design. The converter is secured between the existing competitive J-Series adapter and the RVJ tooth. The helical pin is placed in the tooth's nose, where it is rotated 180 deg. with a common socket wrench and tightly secured. Convert to a fully hammerless system without changing adapters!



See your dealer for
specific part numbers.

Convert to a fully hammerless system without changing adapters.

- 1 Insert converter into adapter.
- 2 Fit tooth over nose and converter.
- 3 Insert helical pin and rotate 180 deg. with socket wrench to engage lock.



John Deere All-Makes Bucket Teeth

John Deere "Original Line" Teeth

John Deere builds rugged replacement teeth and adapters for most brands of backhoes, excavators, loaders, scrapers, and graders. John Deere teeth are available in either split-washer or two-piece-pin configurations to make replacement of these critical wear parts as quick and cost efficient as possible.

Caterpillar Replacement Teeth

The oversized pocket characteristics of these teeth with the extended adapter nosepiece provide a nose fit between the tooth and adapter that results in strong impact resistance with a loose fit in the ramps. Cat style teeth use a horizontal pin and retainer.

H&L Replacement Teeth

H&L style teeth are designed for backhoes and excavators. They are available in a multitude of shapes offering superb performance and reliability in all digging conditions. H&L style teeth use a horizontal flex pin.

Hensley Replacement Teeth

The parabolic (dished-out) design creates a wedging and self-tightening fit. Most Hensley style teeth use a vertical roll pin, flex pin, or steel keeper, depending on size.

ESCO Helilok®/Vertalok® System

Teeth mount on both the Vertalok and Helilok adapters with a quarter turn and "butts ups" against the adapter nose to take thrust loads head-on. The helical threads and large stabilizing flats at the end of the nose deliver maximum resistance to severe breakout forces.

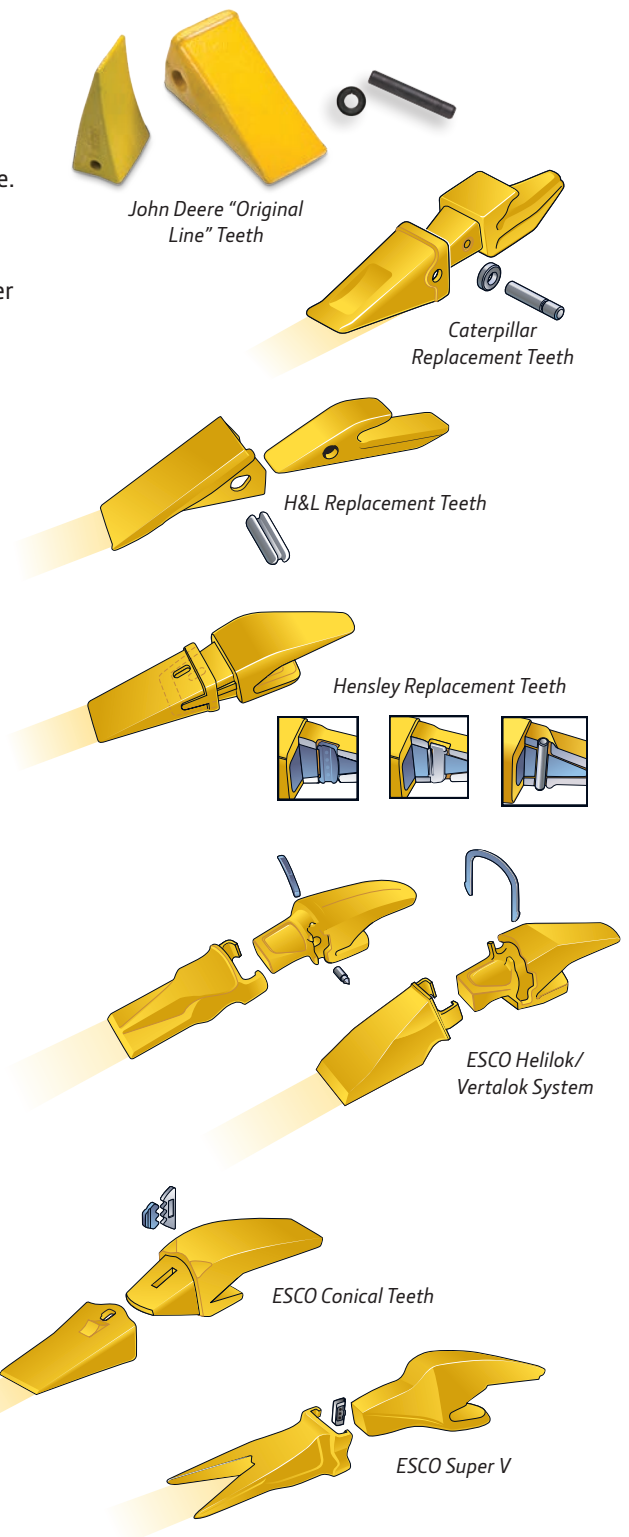
ESCO Conical Teeth

The "conical" design mating system between tooth and adapter creates self-tightening action. The design reduces tooth movement both vertically and horizontally. Conical teeth use a vertical pin and rubber lock.

ESCO Super V™

The Super V tooth twists a quarter turn onto the adapter and "butts up" against the adapter nose to match breakout forces more closely. The one-piece pin provides easier changeover and is reusable for 29 Series sizes and larger.

**John Deere meets your all-makes bucket teeth needs.
See your local John Deere dealer for a full listing of
available parts.**



John Deere Cutting Edges

Protect your investment!

John Deere is your one-stop solution for all your cutting-edge needs.

Our full line of cutting edges covers everything from a standard, economical carbon edge to specialty edges like our John Deere Jagz™ Interlocking Edge System. Talk with your dealer to review your specific application and find out which John Deere system is best for you.

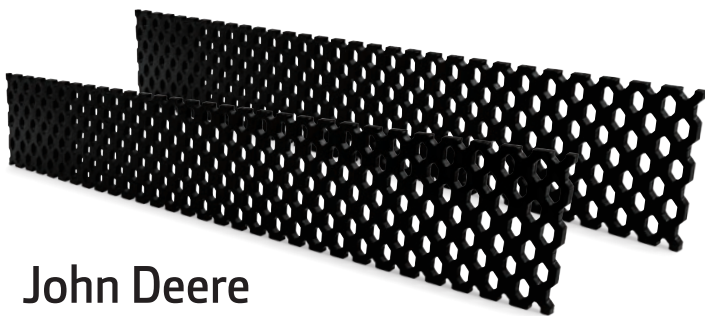


Carbon Edges

The standard for cutting edges, these edges are formed from a high carbon rolled steel, made harder by the addition of carbon.

Dura-Max Edges

Manufactured with thru-hardened 15B30 boron steel, which is significantly harder than the standard carbon edge. Dura-Max edges are made harder via a heat-treatment process in which the blades are heated to extreme temperatures and then quenched to reach maximum hardness levels.



John Deere Lattice Edge

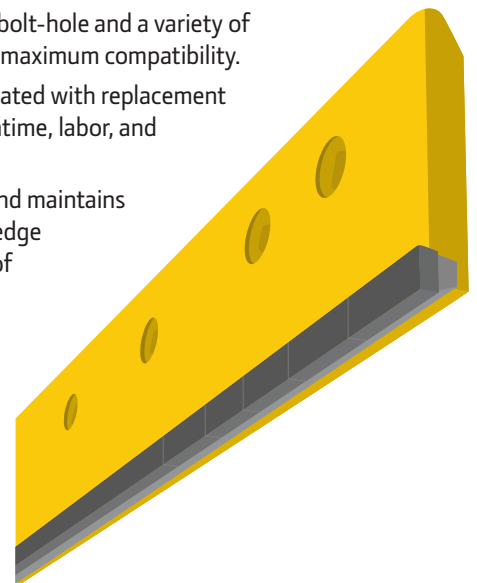
Aggressively cut into ice and snow with the John Deere Lattice Edge. This edge is designed to create a rough surface for salt or sand to collect onto the ice and snow. This cutting edge features a Lattice style design across the entire moldboard width and length to allow for full rotatability.

Dual Carbide Edge

The dual carbide edge features two tungsten carbide inserts specifically designed for high-abrasion and low-impact applications. First insert is formulated with our proprietary macrocrystalline carbide grade for toughness and impact resistance, and mounts on the front of the blade. Second insert is made from a wear-resistant carbide grade and mounts directly behind the first insert to resist wear caused by blade down pressure and abrasion.

Features, advantages, and benefits:

- Provides maximum wear resistance.
- Offers the longest-lasting blade life span in the industry.
- Exclusive, innovative blade design that outlasts imbedded carbide granule-style blades.
- Features a universal bolt-hole and a variety of available lengths for maximum compatibility.
- Reduces costs associated with replacement part inventory, downtime, labor, and overall operations.
- Resists “crowning” and maintains a straighter cutting edge throughout the life of the blade.





John Deere Stinger™ Scarifier-Style Grader Edges

John Deere Stinger grader edges deliver consistent, reliable performance in a wide range of applications.

Stingers eliminate washboarding and potholes, with fewer passes than standard grader blades, as well as decrease the number of passes necessary to properly maintain a road surface. These tungsten-carbide-tipped cutting tools are stronger than steel and penetrate hard-packed, gravel, and frozen surfaces easily. Stinger replaceable, rotating, self-sharpening tools wear uniformly and maintain an even cutting height by enabling them to be rotated from position to position.

Stingers come in over a dozen tool styles and fit universally into three blade strengths for a variety of applications:

- Standard duty – ideal for light-use grading in average conditions
- Heavy duty – useful in most grading environments
- Severe duty – best for working in extreme elements

Cover blades

Wear-resistant steel cover blades are available for operating your scarifier system in extremely abrasive conditions or carrying heavy debris loads on the moldboard. These cover blades provide better protection for the blocks and welds, and easily attach through existing bolt-holes on the blade.



End protectors



End protectors are also available for working in rough conditions. The tough steel, heavy-duty designed end protection bits feature an exclusive combination of ductility and air-hardening steel.



John Deere Forestry Saw Teeth

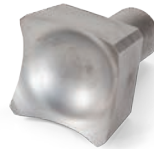


Look sharp on the job.

John Deere offers a full line of saw teeth and saw blades for wheeled and tracked feller bunchers.

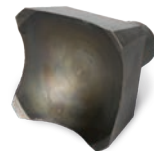
All products are engineered to improve cutting efficiency through design and tooth metallurgy, ensuring you stay sharp for even the toughest jobs.

John Deere's complete lineup of teeth and blades provides loggers unique options for every application. Each quality, high-performing tooth will get the job done while maintaining its cutting edge. Our John Deere Extended Life Saw Teeth deliver durable performance that will significantly reduce operating costs by prolonging teeth-cutting efficiency. No matter how demanding conditions get, your John Deere dealer can provide you with the right solution for saw teeth and saw blades.



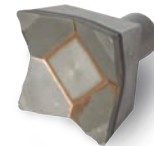
Extended Life

- Additional hours of cutting efficiency in rocky applications
- Heat-treated to withstand more impact over longer periods of time



One-Piece Hardened Concave

- Rocky soil application
- Stays sharp longer in rocky soils and stays functional after rock dentures



One-Piece Carbide Beaver

- Abrasive material application
- Stays sharp longer in sandy soils
- Carbide steel and efficient cutting design

Bolts sold separately.

John Deere Rubber Tracks



THE RIGHT TRACKS ON THE RIGHT PATH

We've improved the roller-path life, steel-cord durability, and metal-core adhesive strength of our rubber tracks for compact track loaders over the previous version. That alone is reason enough to get work rolling the right way, but we'll sweeten the deal with a 10-percent discount for making the jump from aftermarket rubber tracks to John Deere rubber tracks.* This offer is only valid from May 3, 2021, to October 31, 2021, so don't wait to get tough and stay tough. **See your participating dealer for details.**

*Only available at participating dealer locations.
Dealer reference program number TS-F2.

10% OFF

Through October 31, 2022.

See us for program details.

Dealers: Refer to Program Number TS-F2.

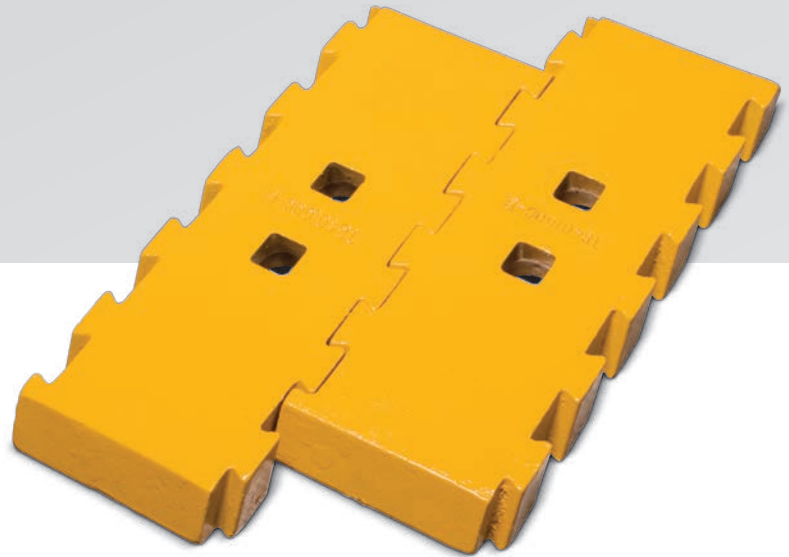
Production-Class Equipment Solutions

JAGZ™ Cutting Edges

JAGZ interlocking cutting edge systems provide an alternative to conventional, non-interchangeable cutting edges.

JAGZ utilize bolt-on edges common to many buckets and can be mounted in a staggered or straight pattern depending on your application. When mounted in a staggered pattern, you get increased penetration and better bucket fill. The straight pattern leaves a smoother working surface, making it perfect for loading. JAGZ also balance wear by swapping the more quickly worn outside edge with the less worn centers.

In addition, JAGZ maximize usable steel by allowing for up to 90-percent wear before replacement, compared to 50-percent usable steel on conventional bolt-on edges. This flexibility is what makes the JAGZ system stand out from the crowd.



JAGZ highlights:

- Guaranteed for life against breakage
- Easy to install and adjust, saving you time and money
- Self-sharpening edges wear from the bottom up, for increased wear
- Reversible, interchangeable pieces deliver more versatility
- Unique cutting angle gives better bucket fill
- Designed for fleet flexibility, including most competitive loaders
- Leaves a smoother work surface, reducing tire wear and increasing comfort

Easy-to-install JAGZ are guaranteed against breakage and fit any model or make of loader.

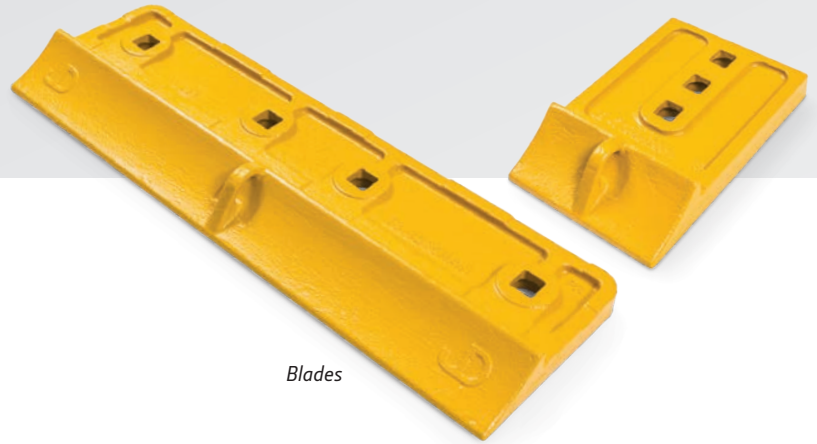


John Deere Half-Arrow Blades

Meet your everyday job solution. Half-arrow designs offer the benefits of more material in high-wear areas, increased bucket capacity, and enhanced bucket penetration.

Maximum depth countersinking allows for optimum wear before the bolt head's failure. The sharpened nose design enables excellent penetration capability and enhanced material flow into the bucket. The combination of half-arrow blades and base-edge covers protects the base edge while optimizing the flow of material into and out of the bucket. This unique design puts more wear material where it is needed most, on the underside of the bucket where abrasion is highest, making it an excellent solution for production-class applications.

Half-arrow edges and segments are built to perform using HighSpec Alloy X14 steel for excellent wear characteristics and superior impact resistance. Half-arrow edges are used to replace the standard double-bevel design commonly used on loaders



Blades



Cover Plates

when no tooth and adapter options are installed. Segments are placed between loader teeth to protect the base edge of the bucket. The half-arrow design offers enhanced protection for the edge and bevel. Combining half-arrow-shaped segments or blades with base-edge covers completely protects the base edge from abrasion.



Half-arrow blades are available for the L-Series Loaders: 644L, 644L Hybrid, 724L, 744L, 824L, and 844L Loaders, and 844L Aggregate Handler.

John Deere
Powertrain ReLife Plus



REBUILT **+** AND **+** RUNNING.
NOW THAT'S A PLUS.

John Deere Powertrain ReLife Plus
MACHINE-REBUILD PROGRAM

*Extend the life of your machine with John Deere Powertrain ReLife Plus.
Design a comprehensive and flexible machine-rebuild solution that
protects your bottom line — and keeps you moving forward.*

- + QUALITY PRODUCTS**
- + SUPERIOR SUPPORT**
- + THE POWER OF CHOICE**

Visit JohnDeere.com/ReLife to learn how your dealer can maximize your machine's uptime.

Introducing John Deere Certified Rebuild Centers



MACHINE SOLUTIONS NEAR YOU

Rebuilding a piece of construction equipment is a major undertaking and requires a special set of skills, tooling, and processes to make sure the job gets done right. The John Deere Certified Rebuild Center program sets the bar high to ensure that your machine rebuild is done efficiently and professionally, and delivers on your expectations by designating specific dealership locations as Certified Rebuild Centers.

Here's what a John Deere Certified Rebuild Center can do for you:

- Thoroughly assess the condition of the machine and provide expert advice on the areas of highest concern

- Provide you with multiple rebuild options to ensure the work being done meets the needs of your business
- Execute your customized machine rebuild plan on schedule, and on budget, to minimize disruption to your operation

Whether you are looking to make your machine look, feel, and function like brand new, or if you just need a plan to extend the machine's life by a few thousand hours, your local Certified Rebuild Center can help you design a customized rebuild plan that meets your needs and fits your budget. The result is a rebuilt machine you can count on, at a lower hourly cost than buying a new machine — **it's the John Deere way.**

JOHN DEERE
CERTIFIED
REBUILD CENTER

Contact your local John Deere dealer to learn how to keep your downtime way down.



Introducing... Extended Warranty for Reman Engines



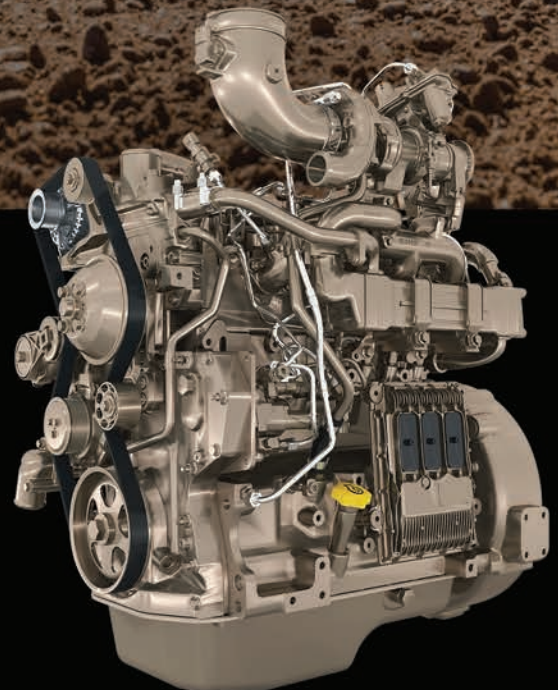
JOHN DEERE
REMAN

Whether you have dirt to push, trucks to load, or mountains to move, your engine is the heart of your machine. Having the peace of mind that you can depend on, your engine allows you to focus on running your operation.

The Extended Warranty program for John Deere Reman engines gives you that peace of mind at an affordable price. When you select a John Deere Reman replacement engine, you can now select from the following extended warranty options:

- 2yr/2,000hr
- 2yr/3,000hr
- 2yr/4,000hr*
- 2yr/5,000hr*
- 2yr/6,000hr*
- 3yr/2,000hr
- 3yr/3,000hr
- 3yr/4,000hr*
- 3yr/5,000hr*
- 3yr/6,000hr*

See your John Deere dealer today for details on this program.



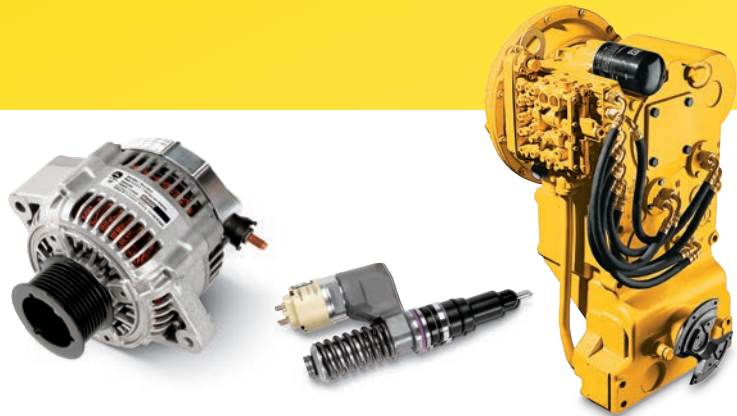
**Not available for Scraper Tractor applications.*



JOHN DEERE
REMAN

Reman solutions.

When time is money and reliability is critical, you need a repair solution you can count on. John Deere Reman provides a full line of remanufactured components which minimize downtime and deliver the same levels of performance and durability as a new component at 60 to 75 percent of the price of new.



| | Articulated Dump Trucks | Backhoes | Crawler Dozers | Crawler Loaders | Excavators | 4WD Loaders | Motor Graders | Scraper Tractors | Skid Steers |
|-----------------------------------|-------------------------|----------|----------------|-----------------|------------|-------------|---------------|------------------|-------------|
| Engines | X | X | X | X | X | X | X | X | X |
| Fuel Injection | X | X | X | X | X | X | X | X | X |
| Transmissions | X | X | | | | X | X | X | |
| Axles / Final Drives | X | X | X | X | X | X | X | X | |
| Hydraulic Pumps | X | X | X | X | X | X | X | X | |
| Hydrostatic Pumps | | | X | X | | | | | |
| Hydrostatic Motors | | | X | X | X | | | | X |
| Rotary Manifolds | | | | | X | | | | |
| Starters and Alternators | X | X | X | X | X | X | X | X | X |
| Electronic Controllers | X | X | X | X | X | X | X | X | X |
| A/C Compressors | X | X | X | X | X | X | X | X | X |
| Turbochargers | X | X | X | X | X | X | X | X | X |
| Internal Engine Components | X | X | X | X | X | X | X | X | X |

NEW! More Remanufactured Engine options recently added!

Reman Complete Engines

| Reman Part No. | Engine Designation Code | Machine Models | Machine Type | New Part No. |
|----------------|-------------------------|--|-------------------|--------------|
| SE502844 | 4045HDW56 | 444K | Loader | PE11257 |
| RM100179 | 4045HDW58 | 444K | Loader | PE11458 |
| SE502837 | 4045HT074 | 450J | Crawler Dozer | PE11261 |
| SE502831 | 4045HT070 | 550K and 650K | Crawler Dozer | PE11260 |
| RM100180 | 4045HT066 | 130G | Excavator | PE11365 |
| RM100181 | 4045HT068 | 160G LC and 180 G LC | Excavator | PE11397 |
| RM100182 | 4045HT063 | 310SK TC, 410K, and 410K TC | Backhoe Loader | PE11285 |
| RM100183 | 4045HT073 | 210K, 310K, 310SK, 310SK TC, 410K, and 410K TC | Backhoe Loader | PE11286 |
| RM100186 | 4045HT072 | 310K EP, 310L EP, 210K EP, and 210L EP | Backhoe Loader | PE11283 |
| RM100107 | 6068HDW85 | 644K Hybrid | Loader | PE12249 |
| RM100110 | 6068HT079 | 710K | Backhoe Loader | PE11294 |
| RM100111 | 6068HT086 | 210G and 210GLC | Excavator | PE11262 |
| RM100122 | 6068HT089 | 655K | Crawler Loader | PE11259 |
| RM100123 | 6068HTJ90 | 1070E and 1170E | Wheeled Harvester | DD22260 |
| RM100124 | 6068HTJ91 | 1110E, 1210E, and 1510E | Forwarder | DD22388 |



Reman Complete Block Assemblies

| Reman Part No. | Engine Designation Code | Model |
|----------------|--|--|
| RM100171 | 4045HT069, 4045HDW56, 4045HDW58, and 4045HT068 | 605K, 444K, 160G LC, and 180G LC |
| SE502829 | 4045HT066, 4045HT070, and 4045HFL92 | 130G, 550K, 650K, and 344K |
| RM100176 | 4045HT063 and 4045HT073 | 210K, 310K, 310SK, 310SK TC, 410K, and 410K TC |
| RM100172 | 4045HT072 | 310K EP, 310L EP, 210K EP, and 210L EP |

John Deere Oil and Lubricants

Plus-50™ II API CK-4/SN Engine Oil

The best John Deere oil, Plus-50 II SAE 15W-40, 10W-30, 5W-40, and 0W-40, is made with a unique additive system that offers excellent protection from deposits and wear. It exceeds API service classification CK-4/SN, and is available in sizes from quarts to totes. It's excellent for all diesel engines!

| Part No. | Description | Size |
|----------|-----------------------------|-----------------------------|
| TY26674 | Plus-50 II, 15W-40 | 1 U.S. qt. (946 ml) |
| TY26673 | Plus-50 II, 15W-40 | 1 U.S. gal. (3.78 L) |
| TY26675 | Plus-50 II, 15W-40 | 2½ U.S. gal. (9.5 L) |
| TY26679 | Plus-50 II, 15W-40 | 5 U.S. gal. (18.9 L) |
| TY26677 | Plus-50 II, 15W-40 | 30 U.S. gal. (113 L) |
| TY26678 | Plus-50 II, 15W-40 | 55 U.S. gal. (208 L) |
| TY26991 | Plus-50 II, 15W-40 | 275 U.S. gal. (1041 L) tote |
| TY26669 | Plus-50 II, 10W-30 | 1 U.S. qt. (946 ml) |
| TY26668 | Plus-50 II, 10W-30 | 1 U.S. gal. (3.78 L) |
| TY26671 | Plus-50 II, 10W-30 | 5 U.S. gal. (18.9 L) |
| TY26670 | Plus-50 II, 10W-30 | 55 U.S. gal. (208 L) |
| TY27734 | Plus-50 II, 10W-30 | 275 U.S. gal. (1041 L) tote |
| TY27740 | Plus-50 II Synthetic, 5W-40 | 1 U.S. gal. (3.78 L) |
| TY27741 | Plus-50 II Synthetic, 5W-40 | 5 U.S. gal. (18.9 L) |
| TY27742 | Plus-50 II Synthetic, 5W-40 | 55 U.S. gal. (208 L) |
| TY26665 | Plus-50 II Synthetic, 0W-40 | 1 U.S. qt. (946 ml) |
| TY26664 | Plus-50 II Synthetic, 0W-40 | 1 U.S. gal. (3.78 L) |
| TY26667 | Plus-50 II Synthetic, 0W-40 | 5 U.S. gal. (18.9 L) |
| TY26666 | Plus-50 II Synthetic, 0W-40 | 55 U.S. gal. (208 L) |
| TY27354 | Plus-50 II Synthetic, 0W-40 | 275 U.S. gal. (1041 L) tote |



Contact your local dealer today
about bulk oil availability!

Hydrau™ and Hydrau™ XR Hydraulic Oils

Hydrau and Hydrau XR are premium hydraulic oils specifically designed for use in hydraulic and hydrostatic systems of construction and forestry equipment.

- Hydrau offers all-season capability in ambient temperatures of –25 deg. C to +50 deg. C (–13 deg. F to +122 deg. F)
- Hydrau XR is a synthetic hydraulic oil that offers all-season capability in ambient temperatures of –40 deg. C to +40 deg. C (–40 deg. F to +104 deg. F)
- Superior oxidation and thermal stability and protect against rust and corrosion
- Extended change intervals

| Part No. | Description | Size |
|----------|-------------|-----------------------------|
| TY27366 | Hydrau | 2½ U.S. gal. (9.5L) |
| TY27367 | Hydrau | 5 U.S. gal. (18.9 L) |
| TY27368 | Hydrau | 55 U.S. gal. (208 L) |
| TY27369 | Hydrau | 275 U.S. gal. (1041 L) |
| TY27318 | Hydrau XR | 5 U.S. gal. (18.9 L) |
| TY27319 | Hydrau XR | 55 U.S. gal. (208 L) |
| TY27735 | Hydrau XR | 275 U.S. gal. (1041 L) tote |



Genuine John Deere Filters

Insist on filters made to the original, correct specifications. Reliable and dependable genuine John Deere parts boost uptime and productivity while lowering your daily operating cost.

Trap microscopic particles.

Our premium John Deere filters are purposely built to protect and extend the life of your machines.

They're made to exact specifications and will fit John Deere equipment and other all-makes applications, including some cars and trucks.



- 1 Heavy-duty canister
- 2 Spring designed for construction applications
- 3 Heavy-duty one-piece metal end caps
- 4 Poly-blend filter element
- 5 Crimped spiral-center tube
- 6 Nut plate with rolled threads
- 7 Rubber gaskets specifically designed for each application

Stay on the jobsite longer with John Deere filters and Plus-50™ II engine oil.

Get great protection with fewer oil changes when you pair John Deere oil filters with premium Plus-50 II engine oil. Specifically designed by John Deere engineers for John Deere equipment, our maintenance products defend your machine from harsh conditions and wear. John Deere Plus-50 II engine oil and John Deere oil filters – it's a winning combination to keep your equipment working longer.



Coolants



Antifreeze/Coolant

Cool-Gard™ II high-performance, long-life, heavy-duty formula

- Formulated for up to 6-year/6,000-hour* life in cooling systems of diesel and gas engines
- Nitrite free
- Supports advanced engine technology
- Protects against corrosion and deposits
- Extends water-pump life and prevents liner cavitation

Cool-Gard II PG

- Less toxic to animals and wildlife than conventional ethylene glycol-based coolants

| Part No. | Description | Freeze Protection | Size |
|-------------------------|-----------------|---------------------------------|-----------------------------|
| Cool-Gard II: | | | |
| TY26573 | Concentrate | Variable; down to -62°F (-52°C) | 1 U.S. gal. (3.78 L) |
| TY26574 | Concentrate | Variable; down to -62°F (-52°C) | 55 U.S. gal. (208 L) |
| TY26575 | 50/50 Pre-mixed | Down to -34°F (-37°C) | 1 U.S. gal. (3.78 L) |
| TY26576 | 50/50 Pre-mixed | Down to -34°F (-37°C) | 2½ U.S. gal. (9.5 L) |
| TY26577 | 50/50 Pre-mixed | Down to -34°F (-37°C) | 55 U.S. gal. (208 L) |
| TY26578 | 50/50 Pre-mixed | Down to -34°F (-37°C) | 330 U.S. gal. (1249 L) tote |
| Cool-Gard II PG: | | | |
| TY26968 | 60/40 Pre-mixed | Down to -52°F (-47°C) | 1 U.S. gal. (3.78 L) |
| TY26969 | 60/40 Pre-mixed | Down to -52°F (-47°C) | 55 U.S. gal. (208 L) |
| TY26970 | 60/40 Pre-mixed | Down to -52°F (-47°C) | 330 U.S. gal. (1249 L) tote |

*Rating applies when complete cooling system flush is performed prior to use.

Coolant Test Kit

Protecting engines from liner cavitation and rust is as important as checking their oil condition. The Coolant Test Kit will provide details to indicate if the fluid is protecting the engine.

| Part No. | Description |
|----------|------------------|
| TY26873 | Coolant Test Kit |
| TY26348 | Pump |
| AT321211 | Sampling Valves |



Diesel Exhaust Fluid (DEF)

John Deere DEF ensures you can be confident you are getting a high-quality product that will provide unsurpassed performance while protecting your equipment investment. Simplify your operation by integrating John Deere DEF into your fluid-maintenance routine.

- Compatible with all engines using selective catalytic reduction (SCR) aftertreatment technology
- Nontoxic, nonhazardous, and nonflammable
- Dispense nozzle included with each 2½-gallon jug
- Drums outfitted with 2-in. bung opening for direct-pump or closed-system dispensing valve and drop-tube installation
- Totes include integrated closed-system dispensing valve and drop tube
- Forklift tubes beneath tote cage for ease in handling
- ISO 22241 compliant for DEF-handling procedures
- American Petroleum Institute (API) certified



Typical Usage Rates*

| John Deere Engine | Rate |
|-------------------|---------------------------|
| 4.5 L | 0.05 gal./hr. (0.2 L/hr.) |
| 6.8 L | 0.1 gal./hr. (0.4 L/hr.) |
| 9.0 L | 0.2 gal./hr. (0.8 L/hr.) |
| 13.5 L | 0.3 gal./hr. (1.1 L/hr.) |

*DEF usage rates shown are based on an average for typical engine duty cycles. DEF consumption is primarily a function of engine speed and load. Actual results may vary.

Container Sizes

| Part No. | Size |
|-------------------|------------------------|
| SWDEF025PK (case) | 2½ U.S. gal. (9.46 L) |
| SWDEF025 (pallet) | 2½ U.S. gal. (9.46 L) |
| SWDEF055 | 55 U.S. gal. (208 L) |
| SWDEF330 | 330 U.S. gal. (1249 L) |
| SWDEFB150 | Bulk (150 U.S. gal.) |
| SWDEFB3000 | Bulk (3,000 U.S. gal.) |

Equipment



Dispensing Pumps

- DEF pump with 20-ft. (6.1 m) hose
- Poly, manual or stainless steel, auto-shutoff nozzle
- Closed-system dispense coupler
- Hookup ready
- Valve and dip tube ordered separately

| Part No. | Description |
|-------------|-----------------|
| SW12VDEFP | 12V Pump, Poly |
| SW110VDEFP | 110V Pump, Poly |
| SW12VDEFSS | 12V Pump, SS |
| SW110VDEFSS | 110V Pump, SS |



Portable Dispensing Unit

- Durable polyethylene molded tank with protective hard cover
- Removable 12-volt, self-priming transfer pump
- 20-ft. (6.1 m) hose
- Poly manual nozzle
- Delivers 7–10 U.S. gpm (26–37 Lpm)

| Part No. | Description |
|-----------|--|
| SWDEF65P | 65 U.S. gal. (246 L) Tank |
| SWDEF65M | DEF Metal Box with Poly PDU, 65 U.S. gal. (246 L) |
| SWDEF65MH | Heated DEF Metal Box with Poly PDU, 65 U.S. gal. (246 L) |

Additional equipment options available.

HANDLING & STORAGE

- Store out of extreme temperatures
- Freeze point: –11°C (12°F)
- Keep out of direct sunlight – Solar heating may raise the temperature of the fluid, which could cause the urea to break down, making it less effective
- Store in sealed containers – Make sure the tamper-proof seal stays intact on totes and drums
- Purchase DEF in quantities that will be consumed within 12 months

John Deere Fuel Additives



Diesel Fuel Conditioner

Cleans and maintains fuel system for optimal power and performance. Prevents injector sticking and includes a lubricity improver to help combat poor fuel quality and increased cetane number, for faster, smoother fuel-efficient starting.

Cold Weather Fuel Conditioner

All the same features as Diesel Fuel Conditioner with the added benefits of:

- Offers lower cold filter plugging point (CFPP) and pour point, which increases engine operability
- Contains a deicer to prevent fuel lines from freezing

Keep Clean

Specifically formulated for high-pressure diesel fuel systems. Powerful detergent prevents and limits formation of deposits that cause injector sticking, misfire, rough riding, power loss, or hard starting conditions.

Emergency Thaw

Dissolves gelled diesel fuel and melts ice in the fuel filter caused by freezing conditions, restoring fuel flow to the engine.

FQS 1.5 Microbicide

Antimicrobial fuel preservation additive recommended for control of bacteria and fungi in fuel system.

Grease

Specially formulated to meet the lubricating needs of tough off- and on-road conditions.

Choose from these grease types to meet your specific needs:

Multi-purpose grease types:

BEST

Multi-Purpose SD Polyurea Grease and Extreme-Duty Synthetic Grease: For high temperatures and extreme pressures. Best used for U-joints, bearings, and other grease points requiring severe-duty grease.

BETTER

Multi-Purpose HD Lithium Complex: Use for bearings, U-joints, and other grease points requiring heavy-duty grease where a lithium or lithium complex grease is recommended.

| Part No. | Description | Size |
|----------|---|------------------|
| TY6341 | Multi-Purpose SD Polyurea Grease | 14-oz. cartridge |
| TY24421 | Multi-Purpose SD Polyurea Grease | 35-lb. pail |
| TY24422 | Multi-Purpose SD Polyurea Grease | 120-lb. keg |
| TY24416 | Multi-Purpose HD Lithium Complex Grease | 14-oz. cartridge |
| TY24417 | Multi-Purpose HD Lithium Complex Grease | 35-lb. pail |
| TY24418 | Multi-Purpose HD Lithium Complex Grease | 120-lb. keg |
| TY25744 | Multi-Purpose Extreme-Duty Synthetic Grease | 14-oz. cartridge |

Special-purpose grease types:

BEST

Calcium Sulfonate 5% Moly Grease: For high temperature and extreme pressure. Protects against corrosion, and stays in place in wet conditions. For use in pins, bushings, and heavy-duty shock loads or continuous sliding contact. Moly grease is not recommended for bearing applications.

BETTER

Heavy-Duty 3% Moly Grease: For those special applications including construction, mining, and heavy industrial equipment. For use in pins, bushings, and ball joints, and shock load and continuous sliding contact.

| Part No. | Description | Size |
|----------|--|------------------|
| TY27373 | Special-Purpose Calcium Sulfonate with 5% Moly | 15-oz. cartridge |
| TY27372 | Special-Purpose Calcium Sulfonate with 5% Moly | 35-lb. pail |
| TY6333 | Special-Purpose HD Moly Grease | 14-oz. cartridge |
| TY22017 | Special-Purpose HD Moly Grease | 35-lb. pail |
| TY24502 | Special-Purpose HD Moly Grease | 120-lb. keg |



Towels and Chemicals

Shop Towels and Absorbents

Start out clean. Toss when done.

Maybe you think that old shop rag of yours is doing the trick, but look at it — it's already dirty. Start fresh each time with John Deere shop towels.

| Part No. | Description |
|----------|--|
| DRC4223 | Shop Towels, 200 Count, Box |
| DRC4221 | Shop Towels, 200 Count, Bucket |
| DRC4222 | Shop Towels, 200 Count, Bucket Refill |
| DRC4601 | Shop Towels, 56 Count, Single Roll |
| DRC4602 | Shop Towels, 56 Count, Three Pack |
| ABS2860 | Absorbent Pads, 100 Count, 15 in. x 19 in. |
| ABS2861 | Absorbent Roll, 28.5 in. x 150 ft., Perforated to 15 in. x 19 in. Sheets |



Cleaners, Chemicals, and Lubricants

John Deere has the product you need, the quality and reliability you demand, and the prices you'll like!

| Part No. | Description |
|----------|------------------------------------|
| RE556468 | Starting Fluid |
| TY25684 | CLASSIC Glass Cleaner |
| TY26101* | Brake & Parts Cleaner |
| TY26350 | Chain and Cable Lubricant, Aerosol |
| TY26352 | All-Purpose Cleaner |
| TY26353 | Penetrating Oil |
| TY26355* | Carburetor and Choke Cleaner |
| TY26357 | Engine Cleaner |
| TY26632 | Electronic Contact Cleaner |

John Deere Hand Cleaner:

| | |
|---------|--|
| TY26066 | General Purpose Hand Cleaner with Pumice, 16 oz. |
| TY26067 | General Purpose Hand Cleaner with Pumice, 1 gal. |

*Part number not available in all areas. See dealer for options.



Paint

Protect your most valuable assets with John Deere paint.



Only from your John Deere dealer.

Your construction and forestry equipment represents a large investment. And you want it to last for years to come. So protect your most valuable assets today with the best paint in the business. John Deere paint.

Only genuine John Deere paint delivers the long-lasting, all-weather finish that shields your heavy-duty machinery from damaging UV rays, rust, and corrosion. Or any other harsh conditions Mother Nature may throw at you.

Pick up a can now at your local John Deere dealer. Better yet... make it two cans!

Batteries



StrongBox™ Original Equipment

Advanced, maintenance-free technology perfect for heavy- and light-duty farm, ranch, construction, utility, and lawn and garden equipment. Maintenance-free Original Equipment batteries are designed and tested for high heat and intense vibration in off-road conditions.

Tested in John Deere equipment by our engineers to meet the demanding machine specifications of your equipment.

John Deere Factory Tested to ensure batteries withstand rigorous off-road and harsh conditions.

Faster starts and power flow efficiencies by an intentional radial plate design.

Increased durability through a positive punched-grid design which prevents corrosion and electrical shorts.

Extended life created by small grid windows to improve active material retention.

Withstands vibration and prolongs life with a heavy-duty polypropylene case and cover, and with anchored plates in most commercial grade batteries.

Maintenance-free — no need to add water during normal service for customer convenience.



StrongBox™ Original Equipment Batteries

Our premium StrongBox Original Equipment battery line fits all makes of heavy-duty equipment used on construction sites. You can't beat StrongBox for quality and value!

| Part No. | BCI | CCA |
|----------|------|------|
| TY25879B | 31 | 950 |
| TY23020B | 4D | 1400 |
| TY21741B | 30H | 650 |
| TY26782B | D4 | 1150 |
| TY21764B | 24 | 550 |
| TY24381B | 4DLT | 1000 |
| TY25803B | 31 | 760 |
| TY21754B | 40 | 1050 |

Backed by the John Deere Warranty.



StrongBox™ Standard-Duty Batteries

Our Standard-Duty battery line is a reliable and economical alternative to the premium StrongBox line. StrongBox Standard-Duty batteries are available for a variety of construction equipment applications.

| Part No. | BCI | CCA |
|----------|------|-----|
| TY27796B | 31 | 925 |
| TY27829B | 4DLT | 860 |
| TY27795B | 31T | 925 |



StrongBox™ Truck/SUV Batteries

StrongBox Truck/SUV batteries are available in a variety of sizes and will fit most automotive models. See your local dealer to find the battery that fits your vehicle needs.

| Part No. | BCI | CCA |
|----------------------|--------|-----|
| Ford | | |
| TY24932B | 65 | 850 |
| Chevy/GMC | | |
| TY27473B | 48 | 730 |
| TY24937B | 78DT | 800 |
| Dodge Ram | | |
| TY24937B | 78DT | 800 |
| TY27804B | 94R/H7 | 790 |
| Toyota/Nissan | | |
| TY24394B | 24F | 710 |
| TY27799B | 27F | 700 |

Backed by the John Deere Warranty.

Battery Accessories



Booster Cables

John Deere offers 2-gauge and 4-gauge Booster Cables in a variety of service options: Extra Heavy-Duty Professional, Commercial, Heavy-Duty Professional, and Heavy-Duty Commercial.

TY26215

NOCO® MAX 6250A Lithium Jump Starter

- Jump-start 12- or 24-volt large agriculture, construction, and forestry equipment
- Jump start up to Class 8+ engines
- High-intensity 2,200 lumen work light
- Provides 12-volt accessory output to power air compressors, inverters, etc.
- Two built-in USB charge ports for on-the-go power
- Comes with an over the shoulder carrying case



A-GB500



Battery Cleaner and Terminal Corrosion Preventer

Help your battery reduce voltage leakage and surface acid with John Deere Battery Cleaner, and avoid corrosion deposits with Terminal Corrosion Preventer.

| Part No. | Description |
|---|--|
| Battery Cleaner and Terminal Corrosion Preventer | |
| TY25767 | Battery Cleaner (15 oz.) |
| TY25766 | Terminal Corrosion Preventer (10 oz.) |
| Booster Cables | |
| 2-gauge and 4-gauge 100% Copper Conduits | |
| TY26217 | Booster Cable, Extra Heavy-Duty, 20-ft., 2-ga. |
| TY26215 | Booster Cable, Commercial Service, 16-ft., 4-ga. |
| TY26216 | Booster Cable, Commercial Service, 20-ft., 4-ga. |
| 2-gauge and 4-gauge Copper Clad | |
| TY27301 | Booster Cable, Heavy-Duty Professional, 20-ft., 2-ga. w/ Bag |
| TY27302 | Booster Cable, Heavy-Duty Commercial, 20-ft., 4-ga. w/ Bag |
| Lithium Jump Starter | |
| A-GB500 | NOCO® MAX 6250A Lithium Jump Starter |

Commercial Job and Workshop Products

From air compressors, pressure washers, and portable generators, to the products shown here, your local dealer has the commercial job and workshop products you need to get the job done.

56-in. Tool Hutch and Cabinet

Heavy-duty, powder-coated steel construction makes the John Deere tool hutch and cabinet one of the most popular tool storage units on the market today. Raise and release drawer fronts keep drawers closed and secure when moving.

| Part No. | Description |
|-------------|---|
| CC-5624H-Y | 56-in. Top Hutch with Shelf |
| CC-5624CB-Y | 56-in. Cabinet with 10 Drawers; 1,950-lb. Load Capacity with 1¼-in. Black-Diamond-Tread Work-Surface 24-in. Depth |



36-in. Road Box

The 36-in., 5-drawer John Deere road box is available in a black powder-coat finish and is the perfect solution for keeping your tools organized when you are on the move. Its secured keyed locking system with over-molded keys and the reinforced drop-front security panel with gasket closure protect your tools from weather and theft. The 16-gauge cradle provides extra reinforcement for day-to-day usage on and off the worksite.

| Part No. | Description |
|-------------|---------------------------------------|
| AC-3615RB-B | 36-in. Road Box with 5 Drawers; Black |



36-in. Triangle Truckboxes

The unique design of the triangle truckboxes keeps your tools, whether metric or SAE, in place and organized when the lid is secured and you are transporting them in the back of your pickup or John Deere Gator™. These distinctive toolboxes allow you to see your entire tool inventory at a glance. Available in three sizes, either with a durable black or construction yellow powder-coat finish.

| Part No. | Description |
|-------------|--|
| CC-3617TB-Y | 36-in. Triangle Toolbox; Yellow Powder-Coat Texture Finish |
| AC-3617TB-B | 36-in. Triangle Toolbox; Black Powder-Coat Texture Finish |

Diesel powered products.

Diesel Air Compressor

The 30-gal. tank of this Diesel Air Compressor gives you the convenience and capability to run large air tools in the most remote locations.

- Two-stage air compressor
- 9.1-hp Kohler electric-start engine with glow plug
- 29.0 CFM @ 175 PSI
- Powder-coated ASME-coded 30-gal. receiver tank
- Battery and cables not included

| Part No. | Description |
|-----------|---|
| CC2-30KDS | 9.1-hp Kohler Diesel Engine, 29.0 CFM @ 175 PSI |

Diesel Compressorator™

The 30-gal. tank of this Diesel Compressorator gives you the convenience and capability to run air and electrical power tools in the most remote locations. Save space, save money with this combination unit.

- Two-stage air compressor
- 3,000-watt rated off-load
- 9.1-hp Kohler electric-start engine with glow plug
- 15.7 CFM @ 175 PSI
- Powder-coated ASME-coded 30-gal. receiver tank
- Battery and cables not included
- Stationary truck mount kit, used when installing stationary unit to the truck bed

| Part No. | Description |
|------------|--|
| CC2-CG35KD | 9.1-hp Kohler Diesel Engine, 15.7 CFM @ 175 PSI, 3,000 watts |

Diesel Generator

Built with high-quality generator components and powered by a Kohler engine, this diesel portable generator costs less to operate than other generators.

- 6,000 max. watts
- 9.1-hp Kohler electric-start engine
- 2.6 U.S. gal. fuel tank
- 6.8-hour run-time @ full load
- Battery included
- Optional wheel kit available — AW-5740-0020

| Part No. | Description |
|------------|--|
| CC-G6000KD | 9.1-hp Kohler Diesel Engine, 6,000 watts |





MAKE THE MOVE TO THE **MyFinancial App** FROM JOHN DEERE FINANCIAL

Run your account your way. The new MyFinancial app lets you tap into all your John Deere Financial account information — all in one place.



Simple: Manage your account on any device, anytime, and anywhere with one app.



Smart: One app gives you instant access to all our digital account management tools. View statements, purchase summaries, and payment information, plus get account notifications and more — all in real time.



Secure: Advanced data security and privacy features are built in to give you safe access to all your account information.



It's easy to get started. Download the MyFinancial app today!



JOHN DEERE
FINANCIAL