

Funk™ F12R

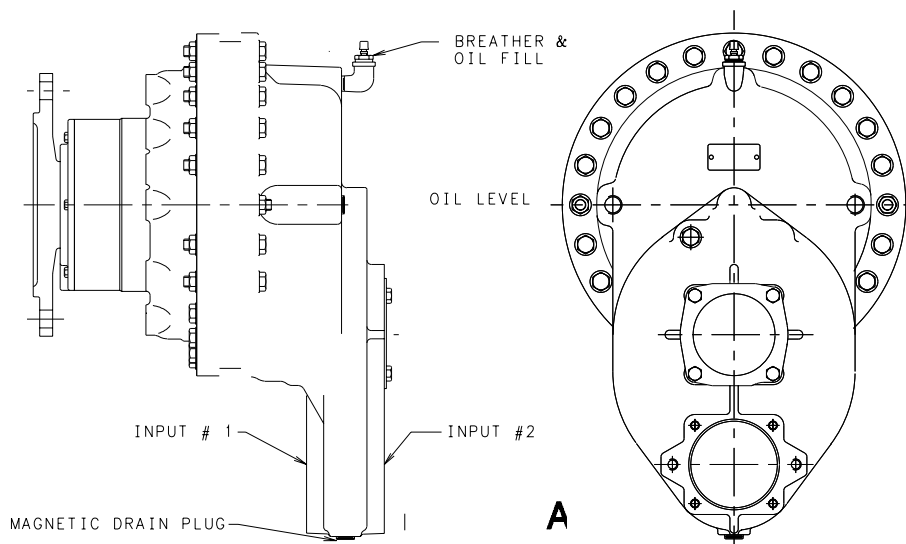
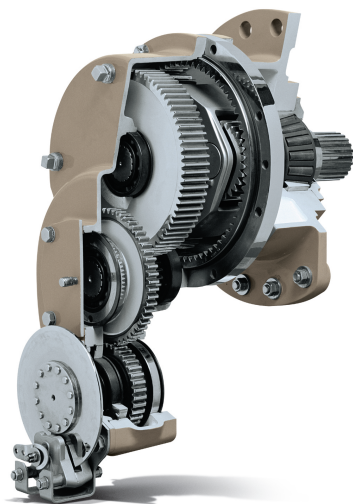
Planetary Drive

Industrial Drivetrain Specifications



JOHN DEERE

Dimensions



Position A, "L" input style, horizontal output shown

Ratings

Input power (max)	35 kW (45 hp)
Input speed (max) ²	2800 rpm ²
Output torque (intermittent)	16,948 Nm (12,500 lb-ft)
Output torque (continuous)	10,168 Nm (7,500 lb-ft)

¹ Actual ratio is dependent on the drive configuration.

² Max input speed related to ratio and max output speed.

³ Max radial load placed at optimum load position.

⁴ Weight varies with configuration and ratio selected.

⁵ Requires tapered roller planet bearings (not available with all ratios).

General data

Approximate dry weight ⁴	91 -122 kg (200 - 270 lb)
Radial load (max) ³	14,287 kg (31,500 lb)
Drive type	Speed reducer
Hydraulic motor input	SAE C or D

Gear ratios

Ratio range ¹	13.1 - 81.3:1
--------------------------	---------------

Features

Variety of input options

- Straight in for an on centerline adaption giving a symmetrical clearance around the hydraulic motor input
- Offset straight in allows the hydraulic motor to be mounted off center
- Right angle input moves the hydraulic motor perpendicular to the center line

Variety of output options

- With external shaft includes keyed, flanged or splint options to meet the various required output connections
- An added output option includes the output without external shaft by offering an internal spline at the output

John Deere Power Systems

3801 W. Ridgeway Ave.
PO Box 5100
Waterloo, IA 50704-5100
Phone: 800.553.6446
Fax: 319.292.5075

Photographs may show non-standard equipment.

Specifications and design subject to change without notice. Ratings may vary depending on application and service. Application and installation are subject to review by John Deere.