

# DAIRY OPERATIONS



JOHN DEERE

COMPACT TRACK LOADERS / SKID STEERS / 4WD LOADERS / ATTACHMENTS



TAKE IT ON



JOHN DEERE DAIRY OPERATIONS



*YOUR DAIRY,*  
**YOUR WAY.**

Running a successful dairy operation can be very labor intensive. That's why so many dairy producers have come to rely on highly productive John Deere equipment. From our new P-Tier Wheel Loaders and proven L-Series Compacts; to our small-, mid-, and large-frame G-Series Skid Steers and Compact Track Loaders; to the more than 100 John Deere attachments that provide versatile connections across our compact product range, we have the machines to help you do your work, your way. **LET'S GET IT DONE.**





+



RELIABLE

PRODUCTIVE





## ***WITHIN EASY REACH BET THE FARM ON IT.***

The range of tasks you can tackle with a John Deere loader has just taken a turn for more. Our lineup has been reimagined with new 444, 524, 544, 624, 644, and 724 P-tier models that productively tackle a wide range of ag and farmyard chores. Proven 344L, 324L, 244L, 304L, and 204L Compact Loaders round out the product offerings that help you reach for and realize more.

### **It hardly seems like work**

Spacious and comfortable P-tier cab features extra legroom, an improved HVAC system, additional storage, and a more adjustable seat featuring a seat-mounted right-hand joystick with two programmable multifunction buttons and electrohydraulic (EH) controls that are more intuitive to operate compared to our K-Series. Or opt for a premium cab with a larger monitor and a heated/ventilated premium seat.

### **Pretty big plus**

Need reliable reach for dumping into feeders, hoppers, and wagons? High-Lift Plus configuration on 524, 544, and 624 P-Tier Wheel Loaders provides an additional 24 inches of hinge-pin height over standard lift height and 12 inches over High-Lift models.

### **Linked in**

Lift path on all P-Tier Wheel Loader Z-Bar linkages is near parallel for better load-leveling capability compared to K-Series models. Loader linkage on the 244L and 324L improves the lift path to near parallel, for increased stability in fork operation and greater holding force than previous models.





### **The bucket list**

A wide selection of enhanced production buckets with integrated spill guards, curved side cutters, and impressive rollback delivers elevated bucket-fill performance and material retention compared to earlier offerings. Bucket and linkage designs improve load leveling, material retention, and visibility for more productivity than previous models.

### **Less delivers more**

Add a light-material bucket to move large volumes of lighter materials such as grain, fertilizer, and even snow without the extra bucket weight.

### **Turn things around**

Industry-exclusive Articulation Plus™ steering system on the 244L, 324L, and 344L enables tight turns with large loads, delivering more turn-tip capability and stability than standard articulation loaders.

### **Get attached**

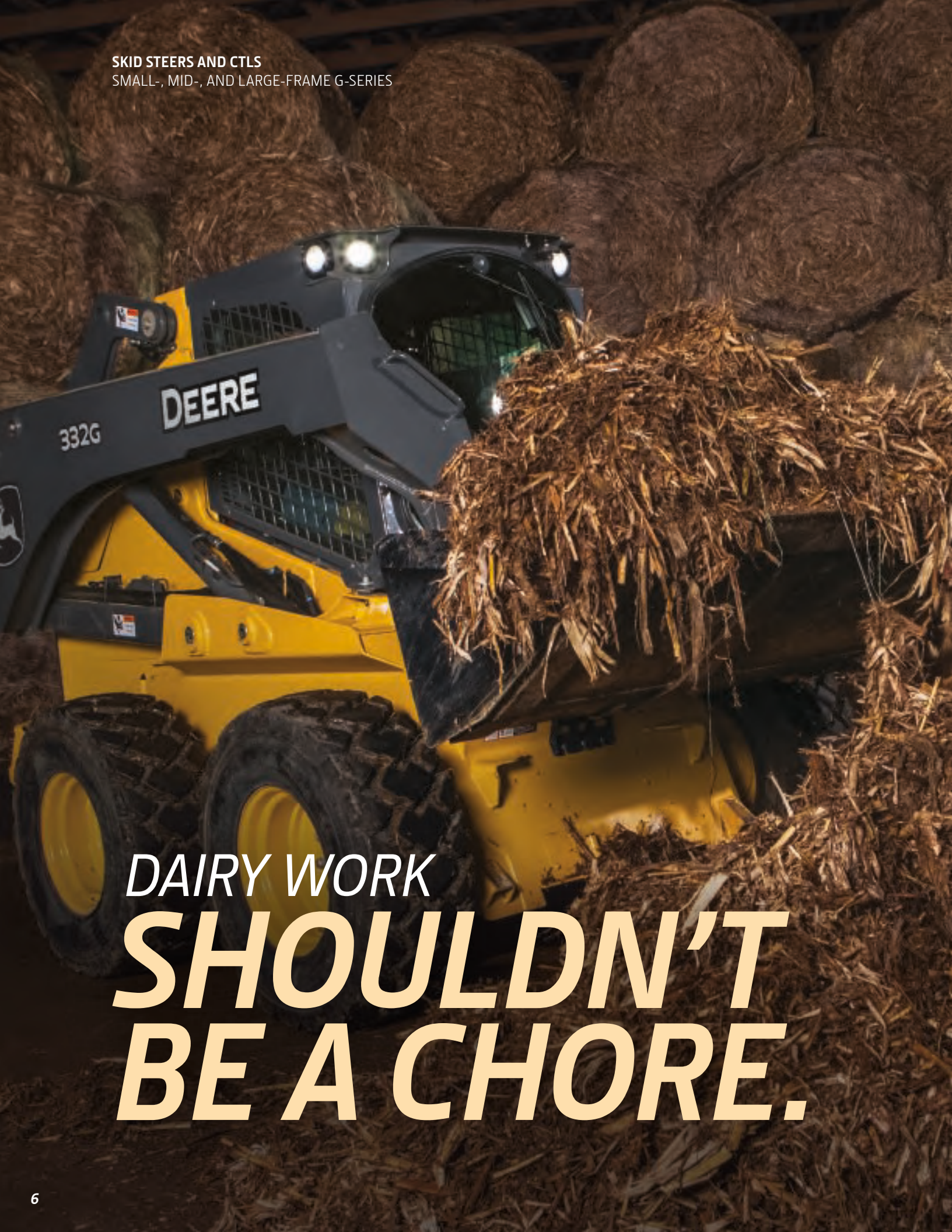
Optional skid-steer-style coupler on the 204L, 244L, 304L, and 324L can be actuated by push button to quickly and easily connect or release attachments without leaving your seat.

### **Overachievers**

With reach of up to 3 feet 1 inch and dump clearance of 8 feet 7 inches, the 204L and 304L are highly able alternatives to skid steers for loading trucks and placing pallets.



SKID STEERS AND CTLs  
SMALL-, MID-, AND LARGE-FRAME G-SERIES



*DAIRY WORK  
SHOULDN'T  
BE A CHORE.*





# ***FLEXIBLE FARMHANDS***

As a dairy farmer, your “to-do” list is never ending. Our G-Series Compact Track Loaders (CTLs) and Skid Steers are designed to help you take it on. Impressive pushing power, torque, bucket breakout forces, and lift heights help handle large loads with ease. Compact sizes enable maneuverability in close quarters. A wide range of model choices from small to mid to large frames and customer-inspired options allow you to match the machine to the application. These agile multitaskers can be ideal extra hands to have around.

---

## **The power of choice**

Select **vertical lift** for increased stability and height when loading and lifting. Or choose a **radial lift** small-frame 316GR Skid Steer for improved digging, grading, and backfilling.

## **When bigger is better**

With their additional lift height and reach, increased boom and bucket breakout forces, and greater horsepower than their small-frame siblings, large-frame 331G and 333G CTLs and 330G and 332G Skid Steers are built to easily tackle your toughest dairy challenges.

## **Feel the boom**

Mid- and large-frame models feature an electrohydraulic (EH) boom-performance package that provides bucket self-leveling in both the up and down directions, and programmable return-to-dig, return-to-carry, and boom-height-kickout settings to ease highly repetitive load and carry tasks.

## **Trim and slim**

Slimmed-down wheel options enable small-frame 316GR and 318G Skid Steers to easily fit through openings as narrow as 60 inches.

## **On the double**

Need to run to the other end of the farm to pick up a hay bale or load the feed mixer? A two-speed transmission (standard on large-frame models; optional on small and mid frames) can really speed things up.

## **Room with a view**

Front, sides, and rear — virtually unobstructed sightlines from the comfortable seat enable a clear view in all directions.

## **Pushing ahead**

Outstanding pushing power and impressive breakout forces deliver sure-footed traction and leverage.



*CONNECT.  
PRODUCE.  
REPEAT.*



# *GET ATTACHED TO DOING MORE*

Silage defacers, side-discharge or rollout buckets, pallet forks, or a bale hugger — our John Deere attachment lineup includes over 100 models ready to turn your machine into a flexible dairy dynamo.





**KEY:** **SS** Skid Steer **CWL** Compact Wheel Loader **CTL** Compact Track Loader



**1. Quik-Tatch™**

With the universal, self-cleaning Quik-Tatch easy-attachment system, you can go from bucket to grapple to whatever in no time flat. Quik-Tatch attachments, Quik-Tatch productivity.

**SS CWL CTL**

**2. Angle-Tatch**

Connecting to the Quik-Tatch coupler for attachment tilt up to 14 degrees left or right, Angle-Tatch enables buckets and other non-hydraulic attachments to rotate for more precise grading and leveling without leaving the seat of the machine.

**SS CWL CTL**

**3. Side-Discharge Buckets**

Spread sand, sawdust, or straw in livestock stalls; backfill gravel into trenches; or precisely place landscape mulch.

**SS CWL CTL**

**4. Silage Defacers**

Unique silage defacers pierce, separate, and rake without cutting or minimizing haulage or silage. Choose a reach of seven or 11 feet to match the task.

**SS CWL CTL**

**5. Material/Manure Scrapers**

Effortlessly push or scrape manure, mud, light snow, or other wet or sloppy materials. Rubber edges are ideal for cleanup on hard surfaces.

**SS CTL**

**6. Bale Hugger/Round Bale Spears**

Bale hugger lifts, moves, and stacks rectangular or round bales up to a 2,400-pound load. Round bale spears feature low-profile designs for clear visibility from the machine.

**SS CWL CTL**

**7. Pallet Forks**

Available in lengths of 42, 48, and 60 inches, our pallet forks feature a brick-guard design for protection against load damage.

**SS CWL CTL**

**8. Rotary Tillers**

Rotary tillers feature rugged construction, heavy-duty tines, and a tilling depth to six inches. Bidirectional operation increases productivity.

**SS CTL**

**9. Buckets**

Rollout buckets feature an open design that enables quick, clean, and easy material loading. Numerous multipurpose, light-material, utility, rock, grading-heel, and other bucket types are also available in varying widths and capacities.

**SS CWL CTL**

**10. Brooms**

Angle and pickup styles are available. Heavy-duty high-torque drive motors promote long-term dependability.

**SS CWL CTL**

**11. Steel Tracks**

Self-cleaning design reduces ground pressure and helps improve traction and flotation in soft, muddy, or loose conditions. Smoothes the ride over hard ground and gravel, too.

**SS**





### 12. Power Rakes

Perfect for seedbed or site prep, power rakes feature easy forward and backward operation. Adjustable end plates provide box-scraper-like performance.

SS CTL

### 13. Augers

Planetary drive with reverse rotation provides fast digging and quick back-outs. Choose from a variety of bit styles and diameters.

SS CWL CTL

### 14. Rubber Tracks

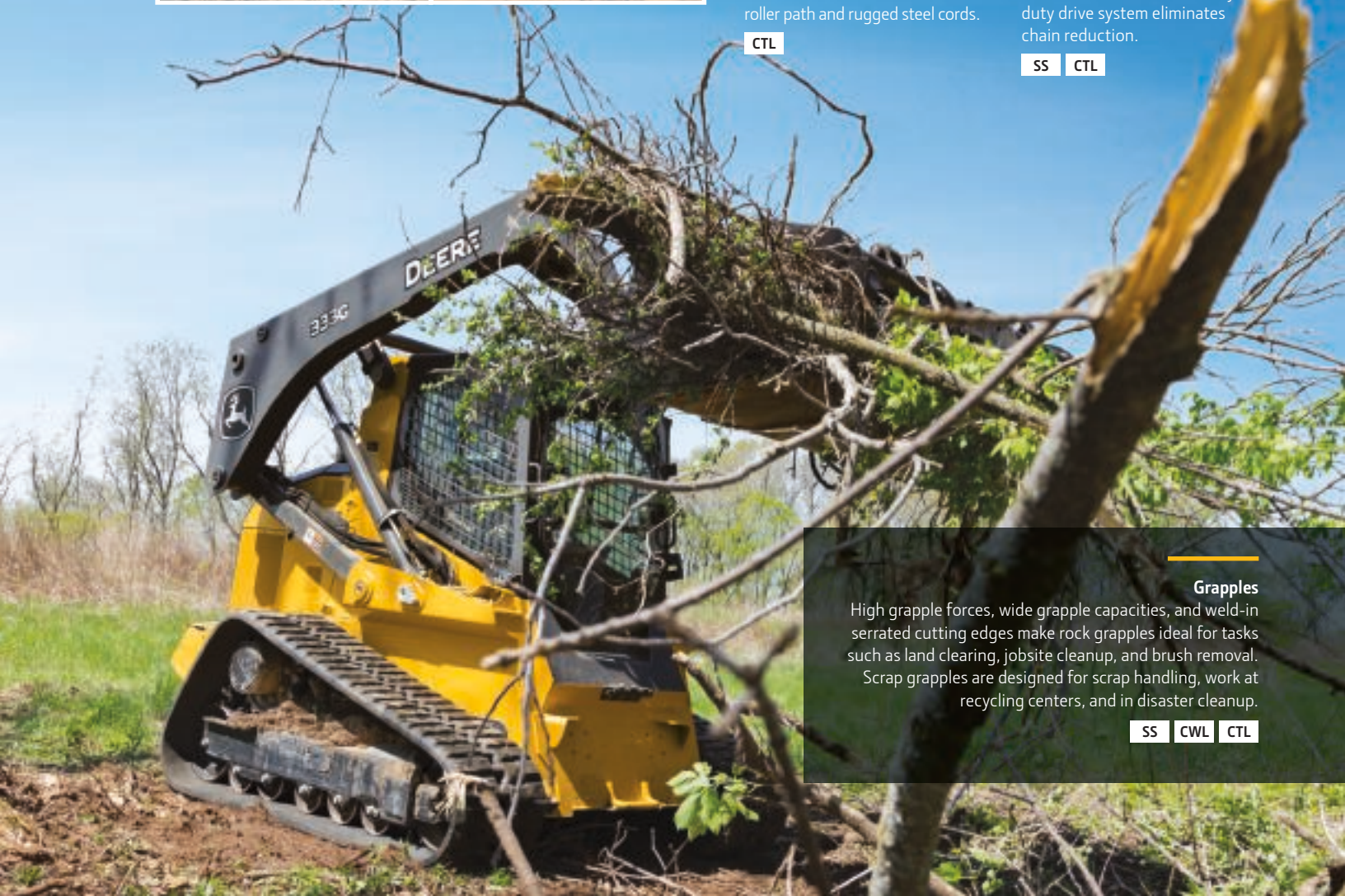
New rubber tracks for compact track loaders feature a curved roller path and rugged steel cords.

CTL

### 15. Trenchers

Choose 36-, 48-, and 60-inch digging depths in high- and standard-flow versions. Heavy-duty drive system eliminates chain reduction.

SS CTL



### Grapples

High grapple forces, wide grapple capacities, and weld-in serrated cutting edges make rock grapples ideal for tasks such as land clearing, jobsite cleanup, and brush removal.

Scrap grapples are designed for scrap handling, work at recycling centers, and in disaster cleanup.

SS CWL CTL





# MILK YOUR MACHINES FOR ALL THEY'RE WORTH.

There's always plenty of work to do on your dairy farm. And you need to make the most of your time and efforts. At John Deere, we're committed to helping you find the best machines for the job, whatever the job, so you can confidently **RUN YOUR WORLD.**



**JOHN DEERE**

[JohnDeere.com](http://JohnDeere.com)



DKBCBDDAIRY Litho in U.S.A. (21-03)