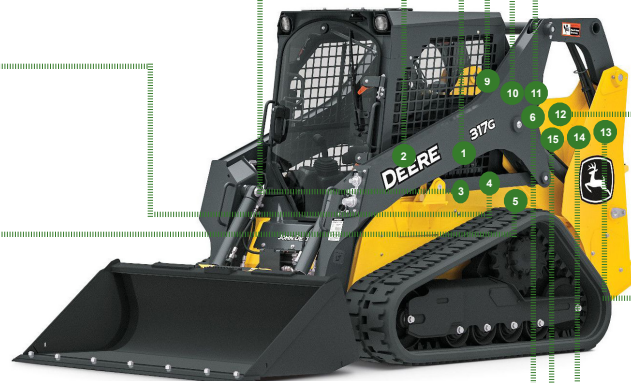


REPLACEMENT PARTS GUIDE

317G Compact Track Loader (PIN: 1T0317G ___ J288093—)



	CAB RECIRCULATION AIR FILTER ELEMENT (IF EQUIPPED) AT359416 Interval (hrs) - As Required.	1
	CAB FRESH AIR FILTER ELEMENT (IF EQUIPPED) AT441536 Interval (hrs) - As Required.	2
	DUST UNLOADER VALVE M89679 Interval (hrs) - As Required.	3
	HYDRAULIC OIL RESERVOIR BREATHER AT443309 Interval (hrs) - 1000.	4
	HYDRAULIC OIL FILTER ELEMENT AT314164 Interval (hrs) - 1000.	5
	DIESEL PARTICULATE FILTER (COMPONENT OF EXHAUST FILTER) MIU802216 Interval (hrs) - As Required.	6
	FILTER PAK AT535117 (Include parts (12, 13, 15)) Interval (hrs) - 500.	7
	FILTER PAK AT535118 (Include parts (4, 5, 9, 10, 11, 12, 13, 15)) Interval (hrs) - 1000.	8



	ENGINE AIR FILTER ELEMENT- PRIMARY AT338105 Interval (hrs) - As Required.	9
	ENGINE AIR FILTER ELEMENT- SECONDARY AT336803 Interval (hrs) - As Required.	10
	FUEL TANK BREATHER H216169 Interval (hrs) - 1000.	11
	ENGINE OIL FILTER ELEMENT MIU800650 Interval (hrs) - 500.	12
	PRIMARY FUEL FILTER AND WATER SEPARATOR MIU802421 Interval (hrs) - 500.	13
	ENGINE ROCKER ARM COVER GASKET MIU802182 Interval (hrs) - 1500.	14
	FINAL FUEL FILTER ELEMENT MIU805005 INTERVAL (HRS) - 500.	15



OILS AND CAPACITIES INFORMATION

317G Compact Track Loader (PIN: 1T0317G _ _ _ J288093—)

Part Description	Qty or capacity	Change Interval In Hours	
John Deere Plus-50™ II Engine Oil ³	7.5 L (2.0 gal)	500	
John Deere Hydrau™ Hydraulic and Hydrostatic System Oil ³	22.7 L (6.0 gal)	1000	
John Deere Hydrau™ XR Hydrostatic Motor Brake Cavity Oil ³ (per side) (317G only)	0.35 L (11.8 fl oz)	1000	
John Deere Cool-Gard™ II Pre-Mix (316GR, 317G, and 318G only)	12.0 L (3.2 gal)	6000	
Fluid Analysis Kits ⁴			
Part Description	Part Number	Qty or capacity	Change Interval In Hours
Diesel Engine Oil	AT346594	1	250
Hydraulic Oil	TY27329	1	500
Diesel Fuel	TY27329	1	500
Engine Coolant	TY27787	1	500
³ See operator's manual for recommended oil type and oil viscosities based on operating temperatures. ⁴ Based on fluid analysis results, intervals may need to be adjusted for operating conditions. Consult an authorized John Deere dealer.			

Plus-50 is a trademark of Deere & Company
Hy-Gard is a trademark of Deere & Company
Hydrau is a trademark of Deere & Company
COOL-GARD is a trademark of Deere & Company



SERVICE INTERVALS

317G Compact Track Loader (PIN: 1T0317G _ _ _ J288093—)

As Required	
<input type="checkbox"/> Check and clean cooling package	<input type="checkbox"/> Check fuel tank breather
<input type="checkbox"/> Check tire pressure (312GR, 314G, 316GR, and 318G only)	<input type="checkbox"/> Replace primary and secondary engine air filter elements
<input type="checkbox"/> Check wheel lug nut torque (312GR, 314G, 316GR, and 318G only)	<input type="checkbox"/> Check and drain primary fuel filter and water separator
<input type="checkbox"/> Replace cab fresh air filter element (if equipped)	<input type="checkbox"/> Check accessory drive belt
<input type="checkbox"/> Replace cab recirculation air filter element (if equipped)	<input type="checkbox"/> Service exhaust filter
<input type="checkbox"/> Lubricate steering centering mechanism (if equipped) ¹	
Every 10 Hours or Daily	
<input type="checkbox"/> Check engine oil level	<input type="checkbox"/> Check hydraulic oil level
<input type="checkbox"/> Check coolant level	<input type="checkbox"/> Lubricate boom linkage, cylinder, and Quik-Tatch™ pivot points
Every 50 Hours	
<input type="checkbox"/> Check and clean dust unloader valve	<input type="checkbox"/> Lubricate Quik-Tatch™ engagement pins
<input type="checkbox"/> Check track tension (317G only)	
Every 100 Hours	
<input type="checkbox"/> Check and adjust accessory drive belt tension (machines without air conditioning only)	
Every 250 Hours	
<input type="checkbox"/> Take engine oil sample	
Every 500 Hours	
<input type="checkbox"/> Drain and refill engine oil and replace filter	<input type="checkbox"/> Take hydraulic oil sample
<input type="checkbox"/> Replace primary fuel filter and water separator	<input type="checkbox"/> Take engine coolant sample
<input type="checkbox"/> Replace final fuel filter	<input type="checkbox"/> Take diesel fuel sample
<input type="checkbox"/> Drain water and sediment from fuel tank	<input type="checkbox"/> Lubricate steering linkage (if equipped) ¹
<input type="checkbox"/> Check chain case oil level (312GR, 314G, 316GR, and 318G only)	<input type="checkbox"/> Lubricate foot pedals (if equipped) ¹
Every 1000 Hours	
<input type="checkbox"/> Drain and refill hydraulic oil and replace filter	<input type="checkbox"/> Check coolant condition
<input type="checkbox"/> Replace hydraulic oil reservoir breather	<input type="checkbox"/> Replace fuel tank breather
<input type="checkbox"/> Drain and refill chain case oil (312GR, 314G, 316GR, and 318G only)	<input type="checkbox"/> Drain and refill hydrostatic motor brake cavity oil (317G only)
Every 1500 Hours	
<input type="checkbox"/> Check and adjust engine valve lash	
Every 6000 Hours	
<input type="checkbox"/> Drain, flush, and refill cooling system	

