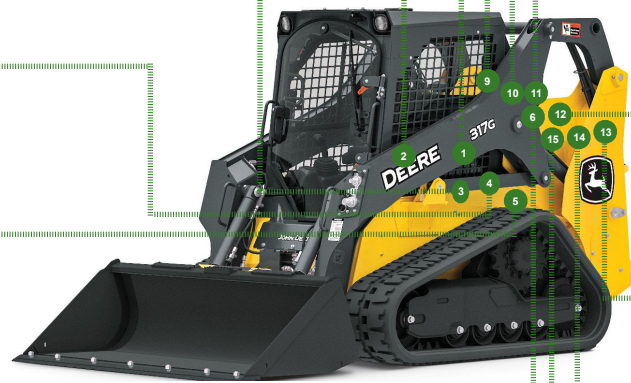


# REPLACEMENT PARTS GUIDE

## 317G Compact Track Loader (PIN: 1T0317G\_ \_ \_J366358- )



	<b>CAB RECIRCULATION AIR FILTER ELEMENT (IF EQUIPPED)</b> <a href="#">AT359416</a> Interval (hrs) - As Required.	1
	<b>CAB FRESH AIR FILTER ELEMENT (IF EQUIPPED)</b> <a href="#">AT441536</a> Interval (hrs) - As Required.	2
	<b>DUST UNLOADER VALVE</b> <a href="#">M89679</a> Interval (hrs) - As Required.	3
	<b>HYDRAULIC OIL RESERVOIR BREATHER</b> <a href="#">AT443309</a> Interval (hrs) - 1000.	4
	<b>HYDRAULIC OIL FILTER ELEMENT</b> <a href="#">AT314164</a> Interval (hrs) - 1000.	5
	<b>DIESEL PARTICULATE FILTER (COMPONENT OF EXHAUST FILTER)</b> <a href="#">MIU802216</a> Interval (hrs) - As Required.	6
	<b>FILTER PAK</b> <a href="#">AT535117</a> (Include parts (12, 13, 15)) Interval (hrs) - 500.	7
	<b>FILTER PAK</b> <a href="#">AT535118</a> (Include parts (4, 5, 9, 10, 11, 12, 13, 15)) Interval (hrs) - 1000.	8



	<b>ENGINE AIR FILTER ELEMENT- PRIMARY</b> <a href="#">AT338105</a> Interval (hrs) - As Required.	9
	<b>ENGINE AIR FILTER ELEMENT- SECONDARY</b> <a href="#">AT336803</a> Interval (hrs) - As Required.	10
	<b>FUEL TANK BREATHER</b> <a href="#">H216169</a> Interval (hrs) - 1000.	11
	<b>ENGINE OIL FILTER ELEMENT</b> <a href="#">MIU800650</a> Interval (hrs) - 500.	12
	<b>PRIMARY FUEL FILTER AND WATER SEPARATOR</b> <a href="#">MIU802421</a> Interval (hrs) - 500.	13
	<b>ENGINE ROCKER ARM COVER GASKET</b> <a href="#">MIU802182</a> Interval (hrs) - 1500.	14
	<b>FINAL FUEL FILTER ELEMENT</b> <a href="#">MIU805005</a> INTERVAL (HRS) - 500.	15



# OILS AND CAPACITIES INFORMATION

## 317G Compact Track Loader (PIN: 1T0317G\_ \_ \_J366358- )

Part Description	Qty or capacity	Change Interval In Hours	
John Deere Plus-50™ II Engine Oil <sup>3</sup>	7.5 L (2.0 gal)	500	
John Deere Hydrau™ Hydraulic and Hydrostatic Oil <sup>3</sup>	22.7 L (6.0 gal)	1000	
John Deere Hy-Gard™ Oil <sup>3</sup> (per side) (312GR,314G,316GR and 318G only)	14.3 L (3.8 gal)	1000	
John Deere Hydrau™ XR Hydrostatic Motor Brake Cavity Oil <sup>3</sup> (per side) (317G only)	0.35 L (0.09 gal))	1000	
John Deere Cool-Gard™ II Pre-Mix (312GR and 314G only)	9.0 L (2.4 gal)	6000	
John Deere Cool-Gard™ II Pre-Mix (316GR, 317G, and 318G only)	12.0 L (3.2 gal)	6000	
Fluid Analysis Kits <sup>4</sup>			
Part Description	Part Number	Qty or capacity	Change Interval In Hours
Diesel Engine Oil	<a href="#">AT346594</a>	1	250
Hydraulic Oil	<a href="#">TY27329</a>	1	500
Diesel Fuel	<a href="#">TY27329</a>	1	500
Engine Coolant	<a href="#">TY27787</a>	1	500
<sup>3</sup> See operator's manual for recommended oil type and oil viscosities based on operating temperatures. <sup>4</sup> Based on fluid analysis results, intervals may need to be adjusted for operating conditions. Consult an authorized John Deere dealer.			

*Plus-50 is a trademark of Deere & Company*

*Hy-Gard is a trademark of Deere & Company*

*Hydrau is a trademark of Deere & Company*

*COOL-GARD is a trademark of Deere & Company*



# SERVICE INTERVALS

## 317G Compact Track Loader (PIN: 1T0317G\_ \_ \_J366358- )

As Required	
<input type="checkbox"/> Check and clean cooling package	<input type="checkbox"/> Check fuel tank breather
<input type="checkbox"/> Check tire pressure (312GR, 314G, 316GR, and 318G only)	<input type="checkbox"/> Replace primary and secondary engine air filter elements
<input type="checkbox"/> Check wheel lug nut torque (312GR, 314G, 316GR, and 318G only)	<input type="checkbox"/> Check and drain primary fuel filter and water separator
<input type="checkbox"/> Replace cab fresh air filter element (if equipped)	<input type="checkbox"/> Check accessory drive belt
<input type="checkbox"/> Replace cab recirculation air filter element (if equipped)	<input type="checkbox"/> Service exhaust filter
<input type="checkbox"/> Lubricate steering centering mechanism (if equipped) <sup>1</sup>	
Every 10 Hours or Daily	
<input type="checkbox"/> Check engine oil level	<input type="checkbox"/> Check hydraulic oil level
<input type="checkbox"/> Check coolant level	<input type="checkbox"/> Lubricate boom linkage, cylinder, and Quik-Tatch™ pivot points
Every 50 Hours	
<input type="checkbox"/> Check and clean dust unloader valve	<input type="checkbox"/> Lubricate Quik-Tatch™ engagement pins
<input type="checkbox"/> Check track tension (317G only)	
Every 100 Hours	
<input type="checkbox"/> Check and adjust accessory drive belt tension (machines without air conditioning only)	
Every 250 Hours	
<input type="checkbox"/> Take engine oil sample	
Every 500 Hours	
<input type="checkbox"/> Drain and refill engine oil and replace filter	<input type="checkbox"/> Take hydraulic oil sample
<input type="checkbox"/> Replace primary fuel filter and water separator	<input type="checkbox"/> Take engine coolant sample
<input type="checkbox"/> Replace final fuel filter	<input type="checkbox"/> Take diesel fuel sample
<input type="checkbox"/> Drain water and sediment from fuel tank	<input type="checkbox"/> Lubricate steering linkage (if equipped) <sup>1</sup>
<input type="checkbox"/> Check chain case oil level (312GR, 314G, 316GR, and 318G only)	<input type="checkbox"/> Lubricate foot pedals (if equipped) <sup>1</sup>
Every 1000 Hours	
<input type="checkbox"/> Drain and refill hydraulic oil and replace filter	<input type="checkbox"/> Check coolant condition
<input type="checkbox"/> Replace hydraulic oil reservoir breather	<input type="checkbox"/> Replace fuel tank breather
<input type="checkbox"/> Drain and refill chain case oil (312GR, 314G, 316GR, and 318G only)	<input type="checkbox"/> Drain and refill hydrostatic motor brake cavity oil (317G only)
Every 1500 Hours	
<input type="checkbox"/> Check and adjust engine valve lash	
Every 6000 Hours	
<input type="checkbox"/> Drain, flush, and refill cooling system	

