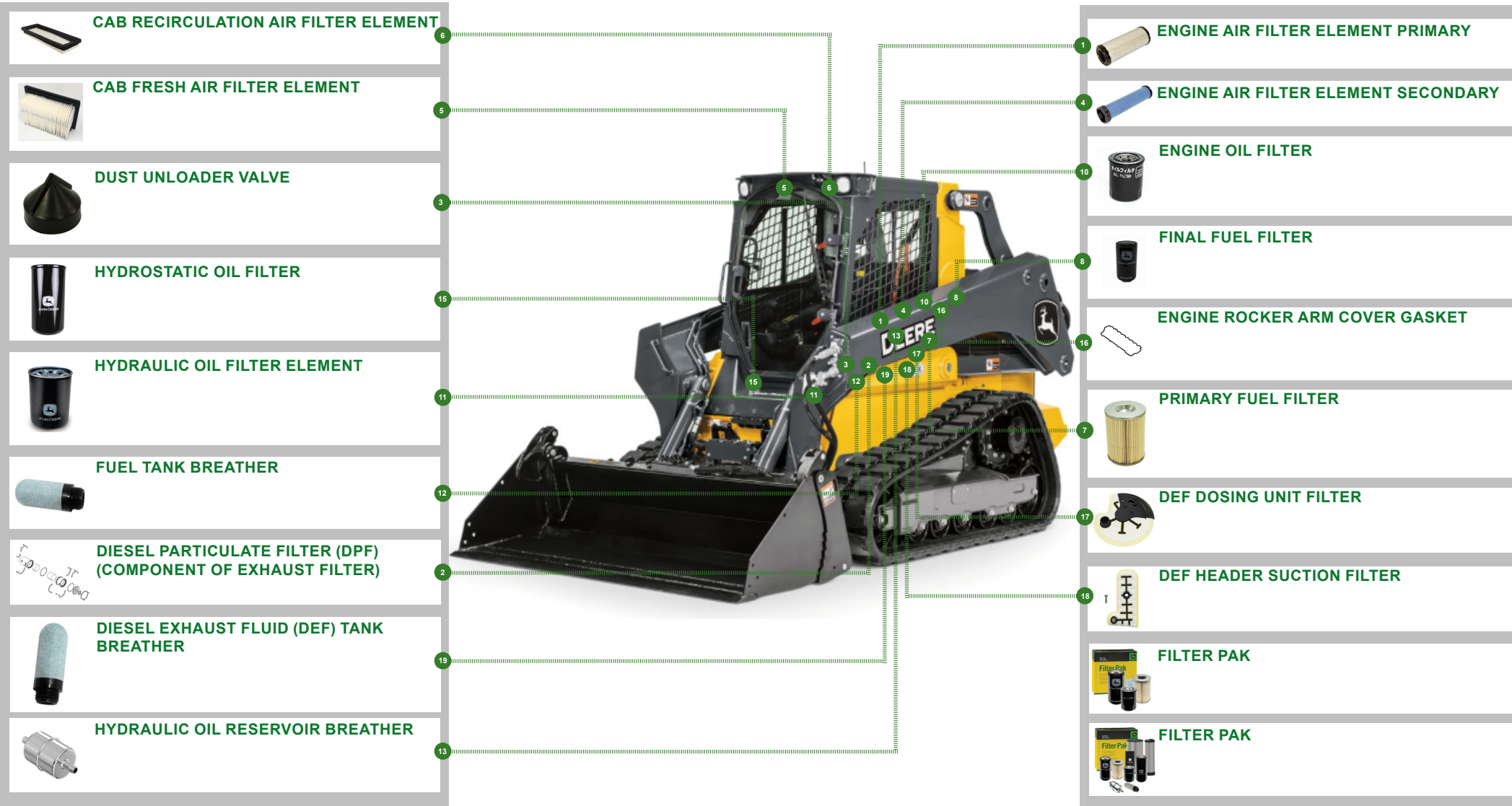


REPLACEMENT PARTS GUIDE

333 P SKID STEER LOADER (PIN: 1T0333PA__F_01130—)



FOR QUANTITY NOT MENTIONED ASSUME AS 1
CLICK PART NUMBER TO BUY

*See operator's manual for additional details.

REQUIRED PARTS

333 P SKID STEER LOADER (PIN: 1T0333PA_ _F_01130-)

Description	Part Number	Every 500 Hours	Every 1000 Hours	Every 1500 Hours	Every 2000 Hours	Every 4000 Hours	Every 6000 Hours
Engine Oil Filter Element	MIU800650	1	1	1	1	1	1
Final Fuel Filter Element	MIU805005	1	1	1	1	1	1
Primary Fuel Filter Element	MIU802421	1	1	1	1	1	1
Hydraulic Oil Reservoir Breather	AT101565		1		1	1	1
Hydraulic Oil Filter Element	AT495722		1		1	1	1
Hydrostatic Oil Filter Element	AT314164		1		1	1	1
Filter Pak 500 Hours ⁴	AT556416	1					
Filter Pak 1000 Hours ⁵	AT556415		1				
Fuel Tank Breather	H216169		1		1	1	1
Engine Rocker Arm Cover Gasket	MIU802567			1			1
Diesel Exhaust Fluid (DEF) Dosing Unit Filter	DZ119429				1	1	1
Diesel Exhaust Fluid (DEF) Header Suction Filter	DZ128861				1	1	1
Diesel Exhaust Fluid (DEF) Tank Breather	H216169					1	
Diesel Particulate Filter (DPF) (component of exhaust filter)	MIA884452	As Required					
Cab Fresh Air Filter Element (if equipped)	AT517634	As Required					
Cab Recirculation Air Filter Element (if equipped)	AT359416	As Required					
Engine Air Filter Element—Primary	T437613	As Required					
Engine Air Filter Element—Secondary	T437617	As Required					
Dust Unloader Valve	R48568	As Required					



CLICK PART NUMBER TO BUY

*See operator's manual for additional details.

OILS AND CAPACITIES INFORMATION

333 P SKID STEER LOADER (PIN: 1T0333PA__F_01130—)

Part Description	Qty or capacity	Change Interval In Hours	
John Deere Hydrostatic Planetary Gear Case Oil ² (per side)	0.8 L (27.0 fl oz)	500	
John Deere Plus-50 II Engine Oil ²	12.0 L (3.0 gal)	500	
John Deere Hydrau Hydraulic Oil ²	34.0 L (9.0 gal)	1000	
John Deere Hy-Gard Chain Case Oil ² (per side)	22.0 L (5.8 gal)	1000	
John Deere Cool-Gard II Pre-Mix	12.3 L (3.2 gal)	6000	
Fluid Analysis Test Kits ³			
Part Description	Part Number	Qty or capacity	Change Interval In Hours
Diesel Engine Oil	AT346594	1	250
Hydraulic Oil	TY27329	1	500
Engine Coolant	TY27787	1	500
<p>¹ Perform initial service once after the first 50 hours of operation.</p> <p>² For recommended oil type and oil viscosities based on operating temperatures, see <i>Maintenance—Machine (3-1)</i>.</p> <p>³ Based on fluid analysis results, intervals may need to be adjusted for operating conditions. See an authorized John Deere dealer.</p> <p>⁴ Included in 500 hours filter pak.</p> <p>⁵ Included in 1000 hours filter pak.</p>			

Plus-50 is a trademark of Deere & Company
Hydrau is a trademark of Deere & Company
Hy-Gard is a trademark of Deere & Company
Cool-Gard is a trademark of Deere & Company



CLICK PART NUMBER TO BUY

*See operator's manual for additional details.

SERVICE INTERVALS

333 P SKID STEER LOADER (PIN: 1T0333PA__F_01130—)

As Required	
<input type="checkbox"/> Check and clean cooling package	<input type="checkbox"/> Check cab recirculation air filter (if equipped)
<input type="checkbox"/> Check and drain primary fuel filter and water separator	<input type="checkbox"/> Check accessory drive belt
<input type="checkbox"/> Drain water and sediment from fuel tank	<input type="checkbox"/> Service exhaust filter
<input type="checkbox"/> Replace primary engine air filter element	<input type="checkbox"/> Clean camera lens (if equipped)
<input type="checkbox"/> Replace secondary engine air filter element (every third primary element replacement or as needed)	<input type="checkbox"/> Check and adjust steering mistracking
<input type="checkbox"/> Check cab fresh air filter (if equipped)	<input type="checkbox"/> Clean and tighten battery terminals
Every 10 Hours or Daily	
<input type="checkbox"/> Check engine oil level	<input type="checkbox"/> Lubricate boom linkage, cylinder pivot points, and Quik-Tatch™ linkage
<input type="checkbox"/> Check coolant level	<input type="checkbox"/> Lubricate an -vibra on bogie pivot (if equipped)
<input type="checkbox"/> Check hydraulic oil level	
Initial Service—50 Hours ¹	
<input type="checkbox"/> Drain and refill hydrostatic planetary gear case oil	
Every 50 Hours	
<input type="checkbox"/> Check and clean dust unloader valve	<input type="checkbox"/> Check track tension
Every 250 Hours	
<input type="checkbox"/> Take engine oil sample	
Every 500 Hours	
<input type="checkbox"/> Drain and refill engine oil and replace oil filter	<input type="checkbox"/> Drain and refill hydrostatic planetary gear case oil
<input type="checkbox"/> Replace primary fuel filter and water separator	<input type="checkbox"/> Take hydraulic oil sample
<input type="checkbox"/> Replace final fuel filter	<input type="checkbox"/> Take engine coolant sample
Every 1000 Hours	
<input type="checkbox"/> Check coolant condition	<input type="checkbox"/> Drain and refill hydraulic oil and replace filter elements
<input type="checkbox"/> Replace fuel tank breather	<input type="checkbox"/> Replace hydraulic oil reservoir breather
Every 1500 Hours	
<input type="checkbox"/> Check and adjust engine valve lash	
Every 2000 Hours	
<input type="checkbox"/> Replace diesel exhaust fluid (DEF) dosing unit filter	<input type="checkbox"/> Clean diesel exhaust fluid (DEF) tank
<input type="checkbox"/> Replace diesel exhaust fluid (DEF) header suction filter	
Every 4000 Hours	
<input type="checkbox"/> Replace diesel exhaust fluid (DEF) tank breather filter	
Every 6000 Hours	
<input type="checkbox"/> Drain and refill cooling system	

