

# REPLACEMENT PARTS GUIDE

## 655K Crawler Loader (PIN: 1T0655KX\_ \_F339326- )



**PRIMARY FUEL FILTER**  
[RE541922](#)  
 Interval (hrs) - 500.

**FINAL FUEL FILTER**  
[RE541925](#)  
 Interval (hrs) - 500.

**AUXILIARY FUEL FILTER (IF EQUIPPED)**  
[AT365870](#)  
 Interval (hrs) - 500.

**HYDRAULIC FAN SYSTEM FILTER**  
[T366738](#)  
 Interval (hrs) - 2000.

**HYDRAULIC OIL FILTER**  
[RE174130](#)  
 Interval (hrs) - 2000.

**HYDRAULIC TANK BREATHER**  
[AM39653](#)  
 Interval (hrs) - 2000.

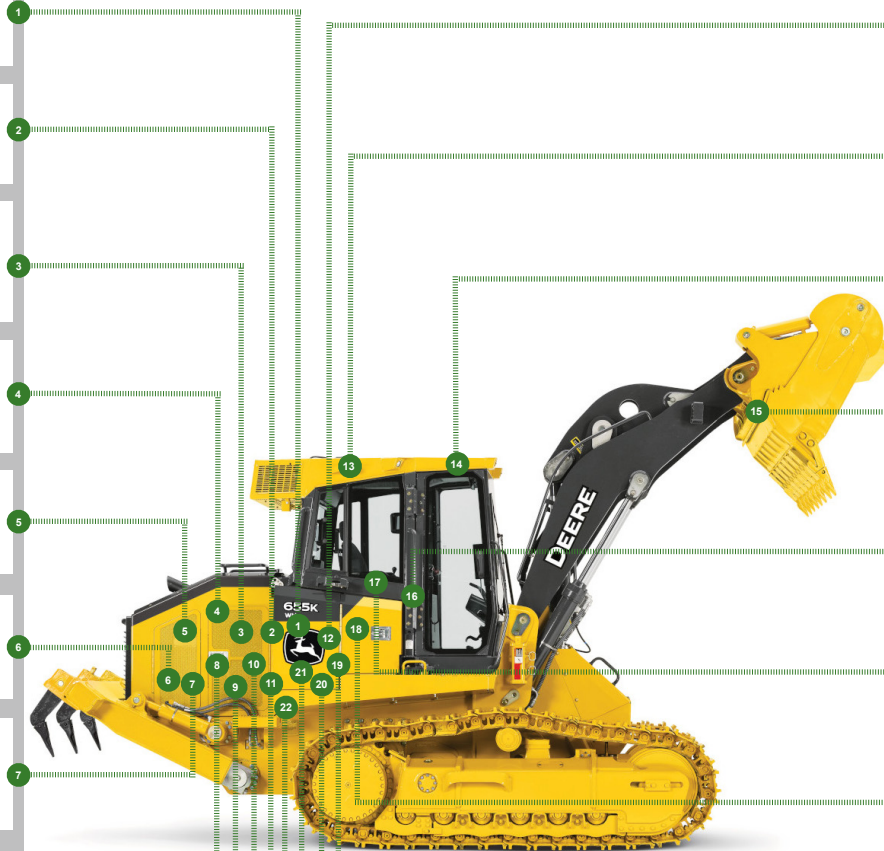
**HYDROSTATIC TRANSMISSION OIL FILTER**  
[AT318160](#)  
 Interval (hrs) - 2000.

**ENGINE OIL FILTER**  
[RE539279](#)  
 Interval (hrs) - 500.

**FUEL TANK BREATHER**  
[T231314](#)  
 Interval (hrs) - 2000.

**HYDROSTATIC TANK BREATHER**  
[AM39653](#)  
 Interval (hrs) - 2000.

**DIESEL EXHAUST FLUID (DEF) DOSING UNIT FILTER**  
[DZ114640](#)  
 Interval (hrs) - 2000.



**OPEN CRANKCASE VENTILATION (OCV) FILTER**  
[DZ105100](#)  
 Interval (hrs) - 2000.

**CAB RECIRCULATION AIR FILTER**  
[AT528017](#)  
 Interval (hrs) - 1000.

**CAB FRESH AIR FILTER**  
[AT191102](#)  
 Interval (hrs) - 1000.

**OUTER PIN SEAL**  
[AT341091](#) (BOOM-TO-BUCKET JOINTS)  
[AT330664](#) (BUCKET LINK JOINTS)  
 Interval (hrs) - 2000.

**ENGINE AIR FILTER—PRIMARY**  
[AT300487](#)  
 Interval (hrs) - As Required.

**ENGINE AIR FILTER—SECONDARY**  
[AT314583](#)  
 Interval (hrs) - As Required.

**DIESEL PARTICULATE FILTER (COMPONENT OF EXHAUST FILTER)**  
[DZ104594](#)  
 Interval (hrs) - As Required.

**ENGINE ROCKER ARM COVER GASKET**  
[R528743](#)  
 Interval (hrs) - 2000.

**DIESEL EXHAUST FLUID (DEF) TANK BREATHER FILTER**  
[H216169](#)  
 Interval (hrs) - 4000.

**DIESEL EXHAUST FLUID (DEF) HEADER SUCTION FILTER AND BAFFLE**  
[AT502964](#)  
 Interval (hrs) - 4000.

**SERPENTINE BELT**  
[DZ118886](#)  
 Interval (hrs) - As Required.



CLICK PART NUMBER TO BUY

\*See operator's manual for additional details.

# OILS AND CAPACITIES INFORMATION

655K Crawler Loader (PIN: 1T0655KX\_\_F339326- )

Part Description	Qty or capacity	Change Interval In Hours	
John Deere Plus-50™ II Engine Oil <sup>1</sup>	24.6 L (6.5 gal)	500	
John Deere Hy-Gard™ Inner Final Drive Oil (each side) <sup>1</sup>	9.5 L (2.5 gal)	1000	
John Deere Hy-Gard™ Outer Final Drive Oil (each side) <sup>1</sup>	15.1 L (4.0 gal)	1000	
API GL-5 Track Frame Pivot Shaft Oil <sup>1</sup>	1.7 L (1.8 qt)	1000	
John Deere Hydrau™ Hydrostatic Transmission Oil <sup>1</sup>	66.6 L (17.6 gal)	2000	
John Deere Hydrau™ Hydraulic System Oil <sup>1</sup>	121.5 L (32.1 gal)	2000	
John Deere COOL-GARD™II Pre-Mix	30.3 L (8.0 gal)	6000	
Fluid Analysis Test Kits <sup>2</sup>			
Part Description	Part Number	Qty or capacity	Change Interval In Hours
Diesel Engine Oil	<a href="#">AT346594</a>	1	250
Hydraulic System Oil	<a href="#">AT346594</a>	1	500
Hydrostatic Transmission Oil	<a href="#">AT346594</a>	1	500
Inner and Outer Final Drive Oil	<a href="#">AT346594</a>	4	500
Engine Coolant	<a href="#">TY26873</a>	1	500
Diesel Fuel	<a href="#">AT180344</a>	1	500

<sup>1</sup> See operator's manual for recommended oil type and oil viscosities based on operating temperatures.  
<sup>2</sup> Based on fluid analysis results, intervals may need to be adjusted for operating conditions. Consult an authorized John Deere dealer.

Plus-50 is a trademark of Deere & Company

Hydrau is a trademark of Deere & Company

Hy-Gard is a trademark of Deere & Company

Cool-Gard is a trademark of Deere & Company



## Service intervals

655K Crawler Loader (PIN: 1T0655KX__F339326- )	
<b>As Required</b>	
<input type="checkbox"/> Inspect and clean cooling package	<input type="checkbox"/> Check and fill windshield washer fluid
<input type="checkbox"/> Inspect or replace belt and check automatic belt tensioner	<input type="checkbox"/> Check and adjust track sag
<input type="checkbox"/> Check and drain primary fuel filter and water separator	<input type="checkbox"/> Service exhaust filter
<input type="checkbox"/> Check and drain auxiliary fuel filter and water separator (if equipped)	<input type="checkbox"/> Replace primary and secondary engine air filter elements
<input type="checkbox"/> Check and replace cab fresh air and recirculation filter elements	<input type="checkbox"/> Check air cleaner dust unloader valve
<input type="checkbox"/> Clean and tighten battery terminals	
<b>Every 10 Hours or Daily</b>	
<input type="checkbox"/> Check coolant level at surge tank	<input type="checkbox"/> Check hydrostatic transmission oil level
<input type="checkbox"/> Check engine oil level	<input type="checkbox"/> Inspect outer pin seals
<input type="checkbox"/> Check hydraulic system oil level	
<b>Every 50 Hours</b>	
<input type="checkbox"/> Lubricate right and left crossbar pivots	<input type="checkbox"/> Lubricate loader linkage and cylinder pivots
<input type="checkbox"/> Lubricate rear ripper (if equipped)	<input type="checkbox"/> Lubricate multipurpose bucket (if equipped)
<b>Every 250 Hours</b>	
<input type="checkbox"/> Check inner and outer final drive oil level	<input type="checkbox"/> Take engine oil sample
<b>Every 500 Hours</b>	
<input type="checkbox"/> Replace primary and final fuel filters	<input type="checkbox"/> Take hydraulic system oil sample
<input type="checkbox"/> Replace auxiliary fuel filter (if equipped)	<input type="checkbox"/> Take hydrostatic transmission oil sample
<input type="checkbox"/> Drain water and sediment from fuel tank	<input type="checkbox"/> Take inner and outer final drive oil sample
<input type="checkbox"/> Drain and refill engine oil and replace filter	<input type="checkbox"/> Take engine coolant sample
<input type="checkbox"/> Check hybrid battery electrolyte level (if equipped)	<input type="checkbox"/> Take diesel fuel sample
<input type="checkbox"/> Replace final fuel filter	
<b>Every 1000 Hours</b>	
<input type="checkbox"/> Replace cab fresh air and recirculation filter elements	<input type="checkbox"/> Check air intake hose and connections
<input type="checkbox"/> Check coolant condition	<input type="checkbox"/> Check and refill track frame pivot shaft bushing oil
<input type="checkbox"/> Drain and refill inner and outer final drive oil	



## Service intervals

Every 2000 Hours	
<input type="checkbox"/> Drain and refill hydraulic system oil and replace filter	<input type="checkbox"/> Replace fuel tank breather
<input type="checkbox"/> Replace hydraulic tank breather	<input type="checkbox"/> Replace diesel exhaust fluid (DEF) dosing unit filter
<input type="checkbox"/> Replace hydraulic fan system filter	<input type="checkbox"/> Replace open crankcase ventilation (OCV) filter
<input type="checkbox"/> Drain and refill hydrostatic transmission oil and replace oil filter	<input type="checkbox"/> Check and adjust engine valve lash
<input type="checkbox"/> Replace hydrostatic tank breather	<input type="checkbox"/> Replace outer pin seals
Every 4000 Hours	
<input type="checkbox"/> Replace diesel exhaust fluid (DEF) tank breather filter	<input type="checkbox"/> Replace diesel exhaust fluid (DEF) baffle
<input type="checkbox"/> Replace diesel exhaust fluid (DEF) header suction filter	<input type="checkbox"/> Clean diesel exhaust fluid (DEF) tank
Every 6000 Hours	
<input type="checkbox"/> Drain and refill engine cooling system	

