

REPLACEMENT PARTS GUIDE

672 P Motor Grader (PIN: 1BZ670GA__C_00001—)

672 P Motor Grader (PIN: 1BZ670GA__D_00001—)



ENGINE AIR FILTER ELEMENT (PRIMARY FILTER)

[AT175223](#)

Interval (hrs) - As Required.



ENGINE AIR FILTER ELEMENT (SECONDARY FILTER)

[AT175224](#)

Interval (hrs) - As Required.



CAB FRESH AIR FILTER

[AT191102](#)

Interval (hrs) - As Required.



CAB RECIRCULATION AIR FILTER

[AT307501](#)

Interval (hrs) - As Required.



ENGINE ROCKER ARM COVER GASKET

[R527884](#)

Interval (hrs) - 2000.



HYDRAULIC TANK BREATHER FILTER

[AT101565](#)

Interval (hrs) - 2000.



ENGINE CRANKSHAFT DAMPER

[RE57604](#)

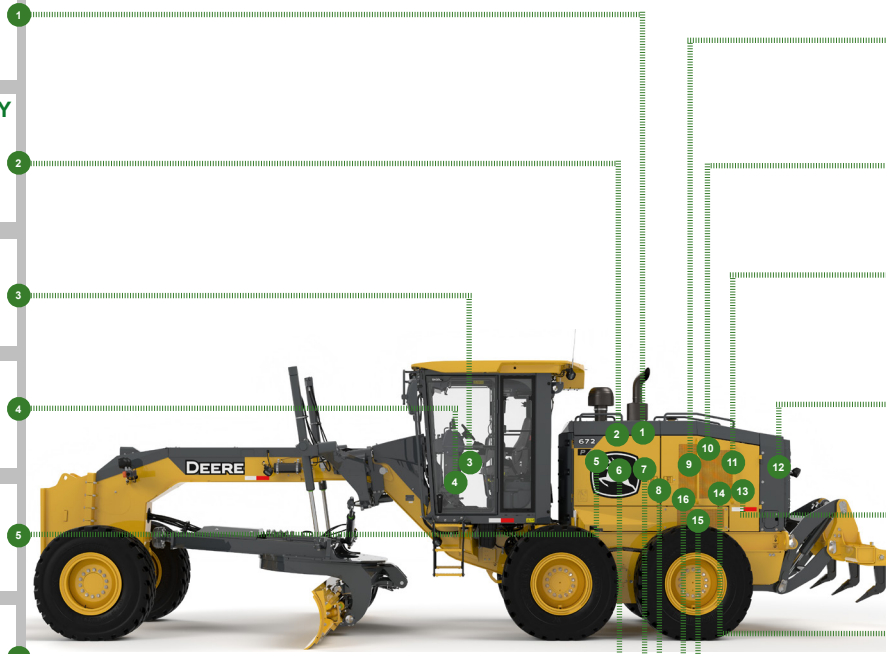
Interval (hrs) - 4500.



6WD HYDRAULIC OIL FILTER (IF EQUIPPED)

[AT367840](#)

Interval (hrs) - 2000.



PRIMARY AND FINAL FUEL FILTER KIT

[RE525523](#)

Interval (hrs) - 500.



HYDRAULIC OIL FILTER

[AT367840](#)

Interval (hrs) - 2000.



FUEL TANK BREATHER

[H216169](#)

Interval (hrs) - 1000.



AXLE OIL FILTER

[DZ118283](#)

Interval (hrs) - 2000.



ENGINE OIL FILTER

[RE504836](#)

Interval (hrs) - 500.



TRANSMISSION OIL FILTER

[AT335492](#)

Interval (hrs) - 2000.



REAR AXLE BREATHER FILTER

[AT101565](#)

Interval (hrs) - 2000.



AUXILIARY FUEL FILTER (IF EQUIPPED)

[AT365869](#)

Interval (hrs) - 500.



JOHN DEERE

OIL AND CAPACITIES INFORMATION

672 P Motor Grader (PIN: 1BZ670GA__C_00001—)

672 P Motor Grader (PIN: 1BZ670GA__D_00001—)

Part Description	Qty or capacity	Change Interval In Hours
John Deere Plus-50™ II Engine Oil ²	28.0 L (7.4 gal)	500
John Deere Hydrau™ Hydraulic System Oil ²	53.0 L (14.0 gal)	4000
John Deere Hy-Gard™ 6WD Hub Oil ² (if equipped) (each)	7.2 L (1.9 gal)	1000
John Deere Hy-Gard™ Transmission and Axle Oil ²	66.4 L (17.5 gal)	2000
John Deere Hy-Gard™ Tandem Oil ² (each)	74.0 L (19.5 gal)	4000
John Deere Hy-Gard™ Circle Gear Case Oil ² (standard circle)	5.7 L (1.5 gal)	2000
John Deere Hy-Gard™ Circle Gear Case Oil ² (premium circle)	6.4 L (1.7 gal)	4500
John Deere Cool-Gard™ II Pre-Mix	48.5 L (12.8 gal)	6000
Fluid Analysis Kits		
Diesel Engine Oil	1	250
Transmission Oil	1	500
Axle Oil	1	500
Tandem Oil	2	500
Hydraulic Oil	1	500
6WD Hub Oil (if equipped)	2	500
Diesel Fuel	1	500
Engine Coolant	1	500
¹ Perform initial service once after the first 500 hours of operation.		
² See operator's manual for recommended oil type and oil viscosities based on operating temperatures.		
³ Based on fluid analysis results, intervals may need to be adjusted for operating conditions. Consult a Local John Deere dealer.		

Plus-50 is a trademark of Deere & Company

Hydrau is a trademark of Deere & Company

Hy-Gard is a trademark of Deere & Company

Cool-Gard is a trademark of Deere & Company



Service intervals

672 P Motor Grader (PIN: 1BZ670GA__C_00001—) 672 P Motor Grader (PIN: 1BZ670GA__D_00001—)	
As Required	
<input type="checkbox"/> Clean cooler cores	<input type="checkbox"/> Inspect accessory belt and belt tensioner spring
<input type="checkbox"/> Clean and tighten battery terminals	<input type="checkbox"/> Replace engine air intake filter elements
<input type="checkbox"/> Clean battery compartment	<input type="checkbox"/> Drain fuel tank sump
<input type="checkbox"/> Replace cab fresh air and cab recirculation filters	<input type="checkbox"/> Drain primary fuel filter and water separator
<input type="checkbox"/> Lubricate circle pinion (standard circle)	<input type="checkbox"/> Drain auxiliary fuel filter and water separator (if equipped)
<input type="checkbox"/> Check tire pressure	<input type="checkbox"/> Check camera (if equipped)
<input type="checkbox"/> Check blade circle and draft frame wear inserts (standard circle)	<input type="checkbox"/> Transmission control unit (TCU) calibration
<input type="checkbox"/> Check blade lift cylinder sockets	<input type="checkbox"/> 6WD controller calibration (if equipped)
<input type="checkbox"/> Lubricate saddle locking pin holes	<input type="checkbox"/> Cross slope sensors calibration (if equipped)
<input type="checkbox"/> Blade side shift wear insert adjustment	<input type="checkbox"/> Hydraulic valves calibration (if equipped)
Every 10 Hours or Daily	
<input type="checkbox"/> Check hydraulic tank oil level	<input type="checkbox"/> Check engine oil level
<input type="checkbox"/> Check transmission oil level	<input type="checkbox"/> Check engine coolant surge tank level
Every 50 Hours	
<input type="checkbox"/> Lubricate frame hinge pivots	<input type="checkbox"/> Lubricate front axle steering pin
<input type="checkbox"/> Lubricate lift cylinders	<input type="checkbox"/> Lubricate tie rod ends
<input type="checkbox"/> Lubricate draft frame ball	<input type="checkbox"/> Lubricate steering cylinders
<input type="checkbox"/> Lubricate dozer blade (if equipped)	<input type="checkbox"/> Lubricate midmount scarifier (if equipped)
<input type="checkbox"/> Lubricate front axle oscillation pin	<input type="checkbox"/> Lubricate circle side shift cylinder
<input type="checkbox"/> Lubricate front axle lean pivot casting pins	<input type="checkbox"/> Lubricate saddle locking pin
<input type="checkbox"/> Lubricate front axle lean bar pivot	
Every 250 Hours	
<input type="checkbox"/> Check hybrid battery electrolyte level (if equipped)	<input type="checkbox"/> Take engine oil sample
Initial Service—Every 500 Hours¹	
<input type="checkbox"/> Replace axle oil filter	<input type="checkbox"/> Replace transmission oil filter



Service intervals

Every 500 Hours	
<input type="checkbox"/> Check tandem oil level	<input type="checkbox"/> Replace primary fuel filter and water separator
<input type="checkbox"/> Check axle oil level	<input type="checkbox"/> Replace auxiliary fuel filter and water separator (if equipped)
<input type="checkbox"/> Drain and refill engine oil and replace filter	<input type="checkbox"/> Take hydraulic oil sample
<input type="checkbox"/> Drain and refill engine oil (quick service) (if equipped)	<input type="checkbox"/> Take transmission oil sample
<input type="checkbox"/> Lubricate tandem pivots	<input type="checkbox"/> Take axle oil sample
<input type="checkbox"/> Check circle gear case oil level (standard circle)	<input type="checkbox"/> Take tandem oil sample
<input type="checkbox"/> Check brake accumulator	<input type="checkbox"/> Take 6WD hub oil sample (if equipped)
<input type="checkbox"/> Replace final fuel filter	<input type="checkbox"/> Take engine coolant sample
<input type="checkbox"/> Check 6WD hub oil level (if equipped)	<input type="checkbox"/> Take diesel fuel sample
<input type="checkbox"/> Lubricate circle ring gear (premium circle)	
Every 1000 Hours	
<input type="checkbox"/> Drain and refill 6WD hub oil (if equipped)	<input type="checkbox"/> Check coolant condition
<input type="checkbox"/> Adjust front wheel bearings (standard axle only)	<input type="checkbox"/> Replace fuel tank breather
<input type="checkbox"/> Check engine air intake hoses	
Every 2000 Hours	
<input type="checkbox"/> Drain and refill axle oil	<input type="checkbox"/> Replace axle oil filter
<input type="checkbox"/> Drain and refill transmission oil	<input type="checkbox"/> Replace hydraulic oil filter
<input type="checkbox"/> Drain and refill transmission oil (quick service) (if equipped)	<input type="checkbox"/> Replace transmission oil filter
<input type="checkbox"/> Replace rear axle breather filter and hydraulic tank breather filter	<input type="checkbox"/> Replace 6WD hydraulic oil filter (if equipped)
<input type="checkbox"/> Drain and refill circle gear case oil (standard circle)	<input type="checkbox"/> Clean engine crankcase ventilation tube
<input type="checkbox"/> Check and adjust engine valve lash	
Every 4000 Hours	
<input type="checkbox"/> Drain and refill hydraulic tank oil	<input type="checkbox"/> Drain and refill tandem oil
<input type="checkbox"/> Drain and refill hydraulic tank oil (quick service) (if equipped)	<input type="checkbox"/> Clean transmission pump inlet screen
<input type="checkbox"/> Drain and refill circle gear case oil (premium circle)	
Every 4500 Hours	
<input type="checkbox"/> Replace engine crankshaft damper	
Every 6000 Hours	
<input type="checkbox"/> Drain and refill cooling system	<input type="checkbox"/> Drain and refill cooling system (quick service) (if equipped)
¹ Perform initial service once after the first 500 hours of operation	

