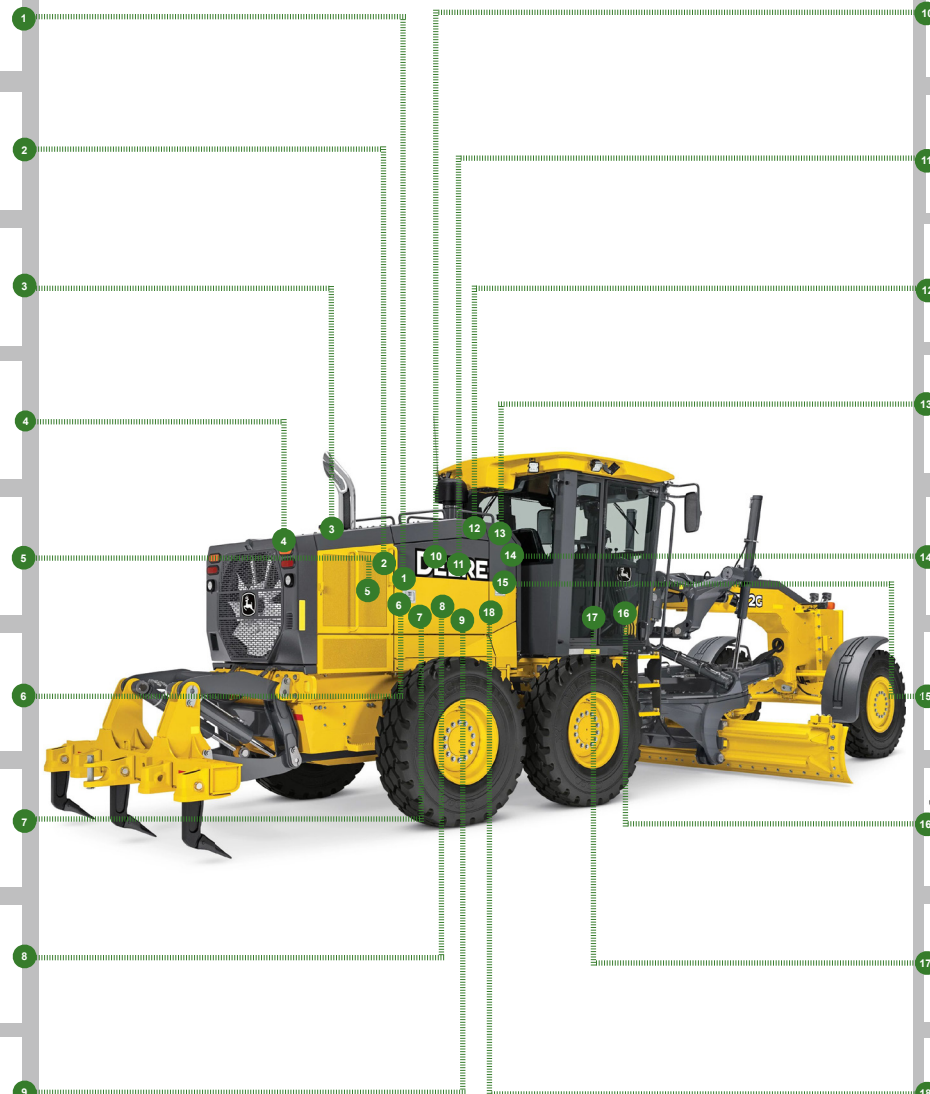




REPLACEMENT PARTS GUIDE

772G and 772GP (PIN: 1DW772G___C678818—680877) / (PIN: 1DW772G___D678818—680877)



IN-LINE FUEL STRAINER
[AT223493](#)
Interval (hrs) - As Required.

REAR AXLE BREATHER
[AT101565](#)
Interval (hrs) - 2000.

HYDRAULIC TANK BREATHER
[AT101565](#)
Interval (hrs) - 2000.

FUEL TANK BREATHER
[H216169](#)
Interval (hrs) - 1000.

HYDRAULIC OIL FILTER
[AT367840](#)
Interval (hrs) - 2000.

TRANSMISSION OIL FILTER
[AT335492](#)
Interval (hrs) - 2000.

AXLE HOUSING OIL FILTER
[AT335492](#)
Interval (hrs) - 2000.

AUXILIARY FUEL FILTER ELEMENT (IF EQUIPPED)
[AT365869](#)
Interval (hrs) - 500.

ENGINE ROCKER ARM COVER GASKET
[R527884](#) - USE WITH [RE529972](#) ENGINE ROCKER ARM COVER
[R526607](#) - USE WITH [RE536705](#) ENGINE ROCKER ARM COVER.
Interval (hrs) - 2000.

CRANKSHAFT DAMPER
[RE57604](#)
Interval (hrs) - 4500.

CRANKSHAFT DAMPER
[RE522932](#)
Interval (hrs) - 4500.

PRIMARY AIR FILTER ELEMENT
[AT175223](#)
Interval (hrs) - As Required.

SECONDARY AIR FILTER ELEMENT
[AT175224](#)
Interval (hrs) - As Required.

ENGINE OIL FILTER
[DZ118283](#)
Interval (hrs) - 500.

PRIMARY AND FINAL FUEL FILTER ELEMENTS KIT
[RE525523](#)
Interval (hrs) - 500.

CAB FRESH AIR FILTER
[AT191102](#)
Interval (hrs) - As Required.

CAB RECIRCULATION AIR FILTER
[AT307501](#)
Interval (hrs) - As Required.

FAST FILL FUEL BREATHER FILTER (IF EQUIPPED)
[T225008](#)
Interval (hrs) - 1000.








CLICK PART NUMBER TO BUY

*See operator's manual for additional details.

PARTS AND CAPACITIES INFORMATION

772G and 772GP (PIN: 1DW772G___C678818—680877) / (PIN: 1DW772G___D678818—680877)

Part Description	Part Number	Qty or capacity	Change Interval In Hours
John Deere Plus-50™ II Engine Oil ² 	TY26674	27.0 L (7.1 gal)	500
John Deere Hy-Gard™ Oil 6WD Hub Oil ² (if equipped) (each) 	TY6354	7.2 L (2.0 gal)	1000
John Deere Hy-Gard™ Oil Transmission, Axle, Circle Gear Case, and Tandem Oil ² 	TY6354	72.1 L (19.0 gal)	2000
Hydrau™ Hydraulic System Oil ² 	TY27316	53.0 L (14.0 gal)	4000
John Deere Cool-Gard™ II Pre-Mix 	TY26575	48.5 L (12.8 gal)	6000
Fluid Analysis Test Kits ³			
Engine Oil	AT346594	1	250
Transmission Oil	AT346594	1	500
Axle Oil	AT346594	1	500
Tandem Oil	AT346594	2	500
Hydraulic Oil	AT346594	1	500
6WD Hub Oil (if equipped)	AT346594	1	500
Diesel Fuel	TY27329	1	500
Engine Coolant	TY26873	1	500
² See operator's manual for recommended oil type and oil viscosities based on operating temperatures.			
³ Based on fluid analysis results, intervals may need to be adjusted for operating conditions. Consult an authorized John Deere dealer.			

Plus-50 is a trademark of Deere & Company
 Hydrau is a trademark of Deere & Company
 Hy-Gard is a trademark of Deere & Company
 Cool-Gard is a trademark of Deere & Company



CLICK PART NUMBER TO BUY

*See operator's manual for additional details.

Service Interval

As Required	
<input type="checkbox"/> Clean cooler cores	<input type="checkbox"/> Drain fuel tank sump
<input type="checkbox"/> Clean and tighten battery terminals	<input type="checkbox"/> Drain primary fuel filter and water separator
<input type="checkbox"/> Clean or replace cab fresh air and cab recirculation filters	<input type="checkbox"/> Drain auxiliary fuel filter and water separator—if equipped
<input type="checkbox"/> Lubricate circle pinion	<input type="checkbox"/> Replace in-line fuel strainer
<input type="checkbox"/> Check tire pressure	<input type="checkbox"/> Check rear camera—if equipped
<input type="checkbox"/> Check blade circle and draft frame wear inserts	<input type="checkbox"/> Transmission control unit (TCU) calibration
<input type="checkbox"/> Check blade lift cylinder sockets	<input type="checkbox"/> 6WD controller calibration—if equipped
<input type="checkbox"/> Lubricate saddle locking pin holes	<input type="checkbox"/> Cross slope sensors calibration—if equipped
<input type="checkbox"/> Blade side shift wear insert adjustment	<input type="checkbox"/> Hydraulic valves calibration—if equipped
<input type="checkbox"/> Inspect accessory belt and belt tensioner spring	<input type="checkbox"/> Replace engine air intake filter elements
Every 10 Hours or Daily	
<input type="checkbox"/> Check hydraulic tank oil level	<input type="checkbox"/> Check engine oil level
<input type="checkbox"/> Check transmission oil level	<input type="checkbox"/> Check engine coolant surge tank level
Every 50 Hours	
<input type="checkbox"/> Lubricate frame hinge pivots	<input type="checkbox"/> Lubricate front axle lean bar pivot
<input type="checkbox"/> Lubricate lift cylinders	<input type="checkbox"/> Lubricate front axle steering pin
<input type="checkbox"/> Lubricate draft frame ball	<input type="checkbox"/> Lubricate tie rod ends
<input type="checkbox"/> Lubricate front mounted scarifier or dozer blade—if equipped	<input type="checkbox"/> Lubricate steering cylinders
<input type="checkbox"/> Lubricate Balderson™ style front lift group—if equipped	<input type="checkbox"/> Lubricate midmount scarifier—if equipped
<input type="checkbox"/> Lubricate front axle oscillation pin	<input type="checkbox"/> Lubricate circle side shift cylinder
<input type="checkbox"/> Lubricate front axle lean pivot casting pins	<input type="checkbox"/> Lubricate saddle locking pin
Initial Service—250 Hours ¹	
<input type="checkbox"/> Drain and refill engine break-in oil and replace filter	<input type="checkbox"/> Replace axle oil filter
<input type="checkbox"/> Drain and refill engine break-in oil (quick service)—if equipped	<input type="checkbox"/> Replace transmission oil filter
Every 250 Hours	
<input type="checkbox"/> Check battery electrolyte level	<input type="checkbox"/> Take engine oil sample
Every 500 Hours	
<input type="checkbox"/> Check tandem oil level	<input type="checkbox"/> Replace primary fuel filter and water separator
<input type="checkbox"/> Check axle oil level	<input type="checkbox"/> Replace auxiliary fuel filter and water separator—if equipped
<input type="checkbox"/> Drain and refill engine oil and replace filter	<input type="checkbox"/> Take hydraulic oil sample
<input type="checkbox"/> Drain and refill engine oil (quick service)—if equipped	<input type="checkbox"/> Take transmission oil sample
<input type="checkbox"/> Check receiver-dryer moisture indicator—if equipped	<input type="checkbox"/> Take axle oil sample
<input type="checkbox"/> Lubricate tandem pivots	<input type="checkbox"/> Take tandem oil sample
<input type="checkbox"/> Check circle gear case oil level	<input type="checkbox"/> Take 6WD hub oil sample—if equipped
<input type="checkbox"/> Check brake accumulator	<input type="checkbox"/> Take engine coolant sample
<input type="checkbox"/> Replace final fuel filter	<input type="checkbox"/> Take diesel fuel sample
<input type="checkbox"/> Check 6WD hub oil level—if equipped	
Every 1000 Hours	
<input type="checkbox"/> Drain and refill 6WD hub oil—if equipped	<input type="checkbox"/> Check engine air intake hoses
<input type="checkbox"/> Adjust front wheel bearings—standard axle only	<input type="checkbox"/> Check coolant
<input type="checkbox"/> Replace fast fill fuel breather filter—if equipped	<input type="checkbox"/> Replace fuel tank breather

Service Interval

Every 2000 Hours	
<input type="checkbox"/> Drain and refill axle oil	<input type="checkbox"/> Clean engine crankcase ventilation tube
<input type="checkbox"/> Drain and refill transmission oil and clean transmission pump inlet screen	<input type="checkbox"/> Replace axle oil filter
<input type="checkbox"/> Drain and refill transmission oil (quick service)—if equipped	<input type="checkbox"/> Replace hydraulic oil filter
<input type="checkbox"/> Replace rear axle breather filter and hydraulic tank breather filter	<input type="checkbox"/> Replace transmission oil filter
<input type="checkbox"/> Drain and refill circle gear case oil	<input type="checkbox"/> Check and adjust engine valve lash (clearance)
Every 4000 Hours	
<input type="checkbox"/> Drain and refill hydraulic tank oil	<input type="checkbox"/> Drain and refill tandem oil
<input type="checkbox"/> Drain and refill hydraulic tank oil (quick service)—if equipped	
Every 4500 Hours	
<input type="checkbox"/> Replace engine crankshaft damper	
Every 6000 Hours	
<input type="checkbox"/> Drain, flush, and refill engine cooling system	<input type="checkbox"/> Drain, flush, and refill engine cooling system (quick service)—if equipped